

RNAV (GPS) RWY 14R

WAAS Chan 75978 W14B	APCH CRS 142°	Rwy Idg 13,501 TDZE 228 Arpt Elev 228
--	-------------------------	--

[USN]

LEMOORE NAS (REEVES FIELD) (KNLC)

RNP APCH - GPS



MISSED APPROACH: Climb to 2800 direct PHROG and hold.

ATIS ★
121.575 327.15

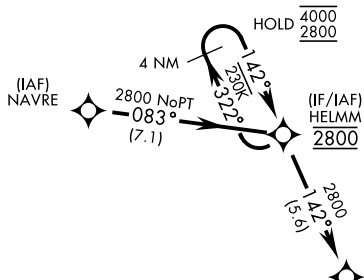
APP CON
124.1 269.025 (N)
118.15 269.025 (S)

TOWER ★
128.3 360.2

GND CON
121.65 305.2

CLNC DEL
124.1 371.9

ASR/PAR



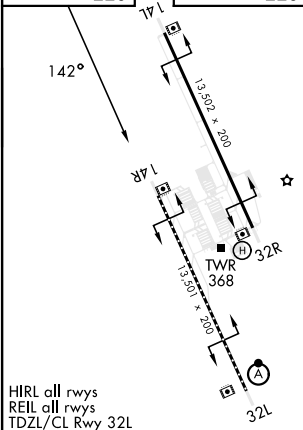
Holding at IAF CIVUN not authorized
with aircraft holding at HELMM.

Simultaneous approaches authorized.
LNAV procedure NA during simultaneous operations.
Use of FD or AP providing RNAV track guidance required
during simultaneous operations.

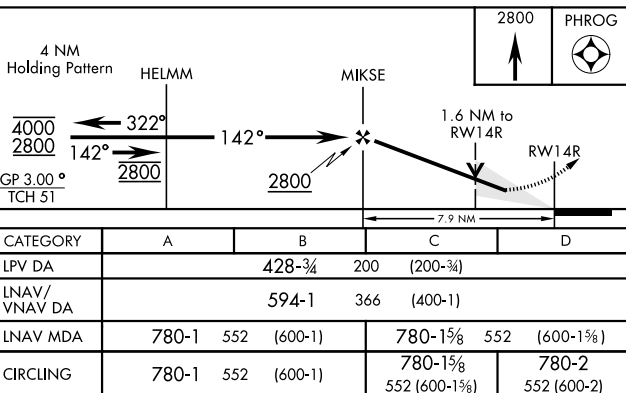
For uncompensated Baro-VNAV systems, LNAV/VNAV procedure NA below -15°C (5°F) and above 54°C (129°F).

EMERG SAFE ALT 100 NM 16,700

ELEV	228		TDZE	228
------	-----	--	------	-----



HIRL all rwys
REIL all rwys
TDZL/CL Rwy 32L



LEMOORE, CALIFORNIA

36°20'N-119°57'W

LEMOORE NAS (REEVES FIELD) (KNLC)

RNAV (GPS) RWY 14R

SW-2, 10 JUL 2025 to 07 AUG 2025

SW-2, 10 JUL 2025 to 07 AUG 2025

Amdt 8 12JUN25