

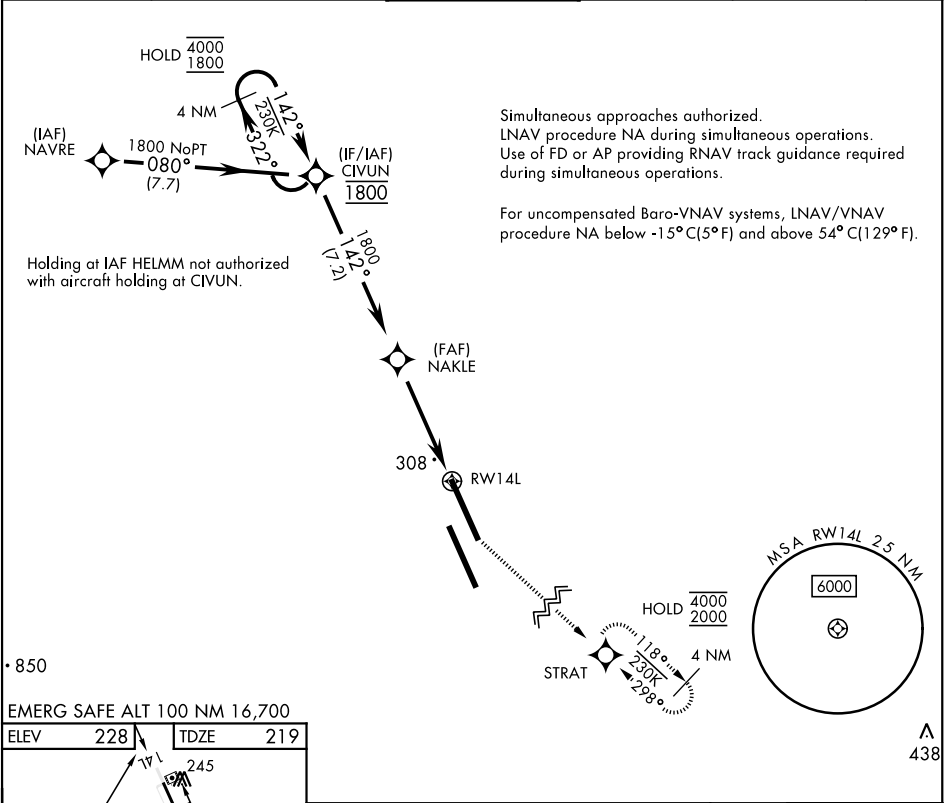
RNAV (GPS) RWY 14L

WAAS Chan 70209 W14A	APCH CRS 142°	Rwy Idg 13,502 TDZE 219 Arprt Elev 228
--	-------------------------	---

[USN]

LEMOORE NAS (REEVES FIELD) (KNLC)

RNP APCH-GPS		MISSED APPROACH: Climb to 1200, then climbing left turn to 2000 direct STRAT and hold.			
ATIS ★ 121.575 327.15	APP CON 124.1 269.025 (N) 118.15 269.025 (S)	TOWER ★ 128.3 340.2	GND CON 121.65 305.2	CLNC DEL 124.1 371.9	ASR/PAR



SW-2, 10 JUL 2025 to 07 AUG 2025

SW-2, 10 JUL 2025 to 07 AUG 2025