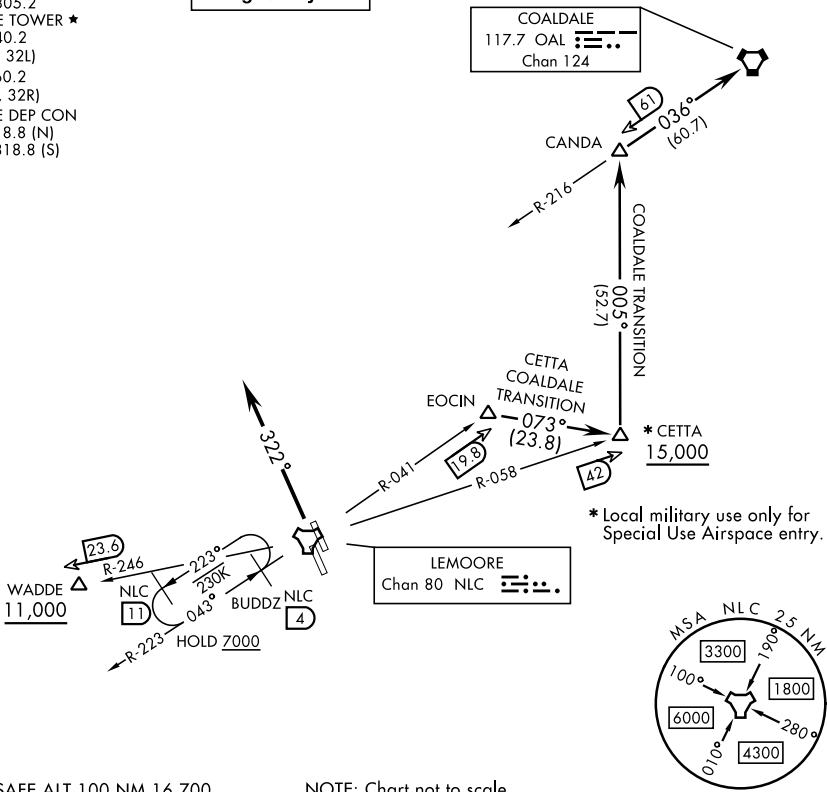


ATIS ★ 121.575 327.15  
CLNC DEL  
124.1 371.9  
GND CON  
121.65 305.2  
LEMOORE TOWER ★  
128.3 340.2  
(Rwy 14L, 32L)  
128.3 360.2  
(Rwy 14R, 32R)  
LEMOORE DEP CON  
124.1 318.8 (N)  
118.15 318.8 (S)

TOP ALTITUDE:  
Assigned by ATC

RADAR required



EMERG SAFE ALT 100 NM 16,700 NOTE: Chart not to scale

**DEPARTURE ROUTE DESCRIPTION**

**TAKEOFF RUNWAYS 32L/32R:** Climb to 2000 via hdg 322° then RADAR vectors to join assigned transition or route.

**CETTA TRANSITION (NLC2.CETTA):** From EOCIN direct CETTA then as filed. Cross CETTA at or above 15,000.

**COALDALE TRANSITION (NLC2.OAL):** From EOCIN direct CETTA, direct CANDA, direct COALDALE VORTAC. Cross CETTA at or above 15,000.

**WADDE TRANSITION (NLC2.WADDE):** From WADDE then as filed. Cross WADDE at or above 11,000.

**LOST COMMUNICATIONS:** If no transmissions are received within 8 DME of NLC TACAN, fly departure heading to intercept NLC 10 DME arc, arc to respective departure radial then via departure radial to assigned departure fix. Then via assigned route. Once established on departure radial climb to filed altitude.