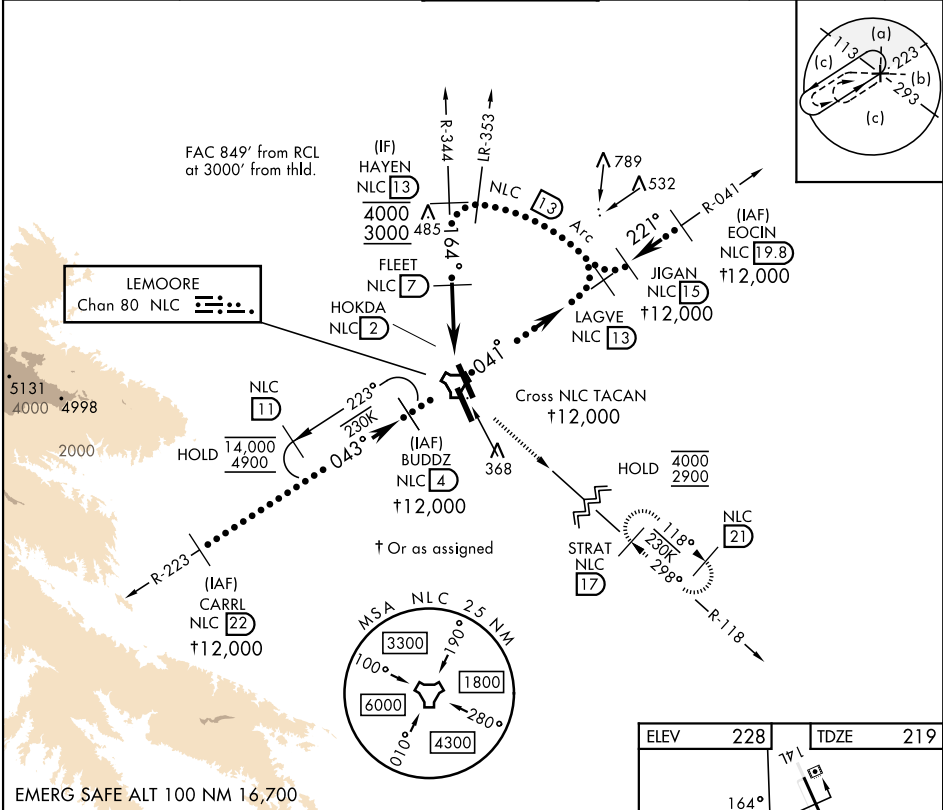


HI-TACAN Z RWY 14L

TACAN NLC Chan 80	APCH CRS 164°	Rwy Idg 13,502 TDZE 219 Arpt Elev 228	[USN]	LEMOORE NAS (REEVES FIELD) (KNLC)
-----------------------------	-------------------------	--	-------	-----------------------------------

T			MISSED APPROACH: Climb to 700 then climbing left turn to 2900 direct STRAT and hold.		
ATIS★ 121.575 327.15	APP CON 124.1 269.025 (N) 118.15 269.025 (S)	TOWER ★ 128.3 340.2	GND CON 121.65 305.2	CLNC DEL 124.1 371.9	ASR/ PAR



ELEV 228			TDZE 219		
164°			13,502 x 200		
17R			32R		
13-30 x 200			32L		
TWR 368			A		
HAYEN NLC 13 4000 3000			FLEET NLC 7		
164°			1900		
2.64°			TCH 54		
5 NM			HOKDA NLC 2		
NLC TACAN			STRAT NLC 17		
CATEGORY	C	D	E		
S-14L	660-1½	441	(500-1½)		
CIRCLING	680-1½ 452 (500-1½)	780-2 552 (600-2)	800-2 572 (600-2)		

HI-TACAN Z RWY 14L

SW-2, 10 JUL 2025 to 07 AUG 2025

SW-2, 10 JUL 2025 to 07 AUG 2025