


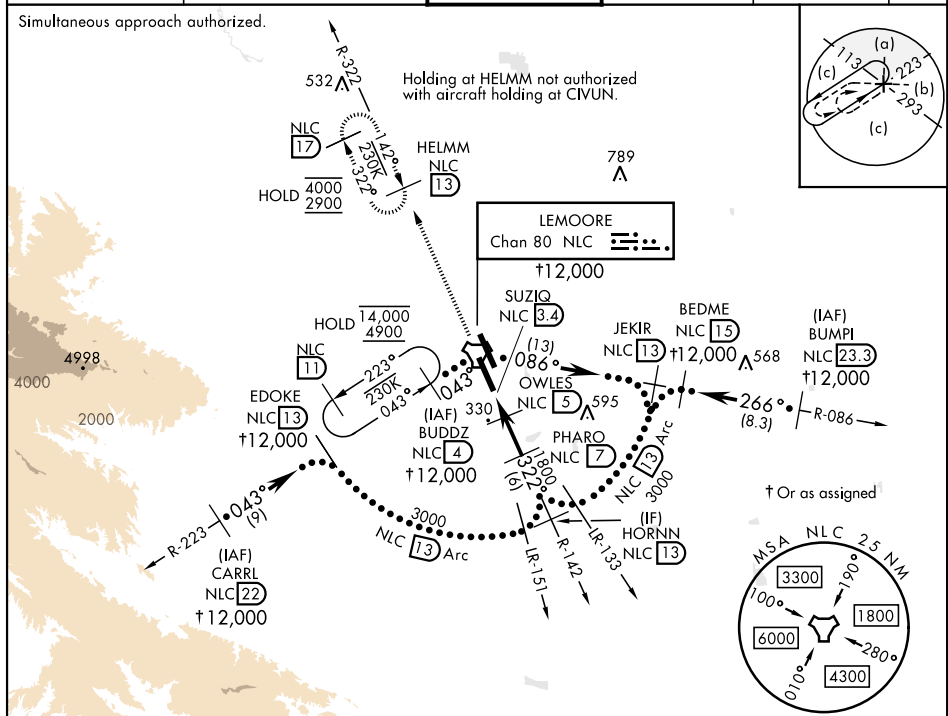
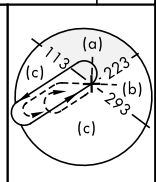
HI-TACAN X RWY 32L

TACAN NLC Chan 80	APCH CRS 322°	Rwy Idg 13,501 TDZE 227 Arpt Elev 228	[USN]	HI-TACAN X RWT SZL LEMOORE NAS (REEVES FIELD) (KNLC)
-----------------------------	-------------------------	--	-------	---

<p>▼ * When ALS inop, increase CAT CDE vis to 1 mile.</p>	<p>ALSF-2</p> 	<p>MISSED APPROACH: Climb to 2900 via NLC TACAN R-142 to NLC, then via NLC R-322 to HELMM and hold.</p>
--	---	--

ATIS★ 121.575 327.15	APP CON 124.1 269.025 (N) 118.15 269.025 (S)	TOWER ★ 128.3 340.2	GND CON 121.65 305.2	CLNC DEL 124.1 371.9	ASR/ PAR
-------------------------	--	------------------------	-------------------------	-------------------------	-------------

Simultaneous approach authorized.



EMERG SAFE ALT 100 NM 16,700

LEMOORE, CALIFORNIA

36°20'N-119°57'W

LEMOORE NAS (REEVES FIELD) (KNLC)

HI-TACAN X RWY 32L