

APP CRS	Rwy Ldg	7201
252°	TDZE	2341
	Apt Elev	2351

RNAV (GPS) RWY 24

GENERAL WM J FOX AIRFIELD (WJF)

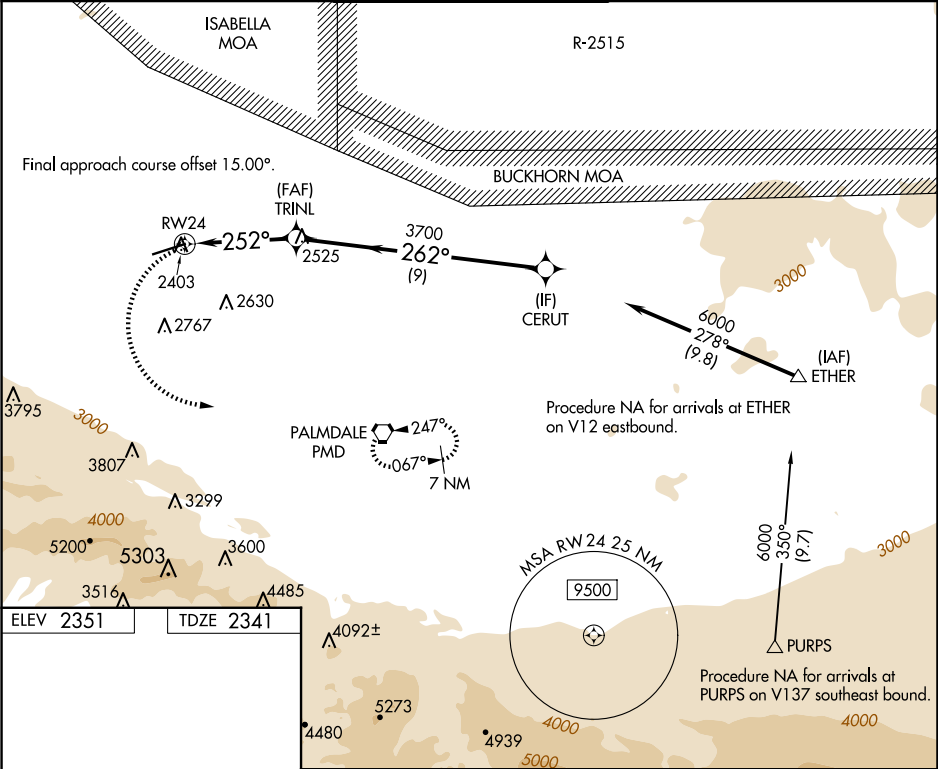
RNP APCH - GPS.

▼

Rwy 24 helicopter visibility reduction below ¾ NA. VDP NA when using Palmdale altimeter setting. When local altimeter setting not received, use Palmdale altimeter setting and increase all MDAs 60 feet and LNAV visibility Cat C/D ¼ SM, and Circling visibility Cat C/D ¼ SM.

MISSED APPROACH: (Do not exceed 210K until PMD VORTAC) Climbing left turn to 7200 direct PMD VORTAC and hold, continue climb-in-hold 7200.

ATIS	JOSHUA APP CON	FOX TOWER*	GND CON	UNICOM
126.3	126.1 290.3	118.525 (CTAF) 256.9	121.7 256.9	122.95



ELEV 2351

TDZE 2341

7201 x 150

24

252°

2421

7200

PMD

2.1 NM to RW24

3.12°

TCH 40

252°

3700

262°

6000

TRINL

CERUT

2.1 NM

1.9 NM

9 NM

CATEGORY	A	B	C	D
LNAV MDA	3060-1	719 (800-1)	3060-2	719 (800-2)
CIRCLING	3060-1	709 (800-1)	3120-2¼ 769 (800-2¼)	3120-2½ 769 (800-2½)

REIL Rwy 6 and 24

MIRL Rwy 6-24