

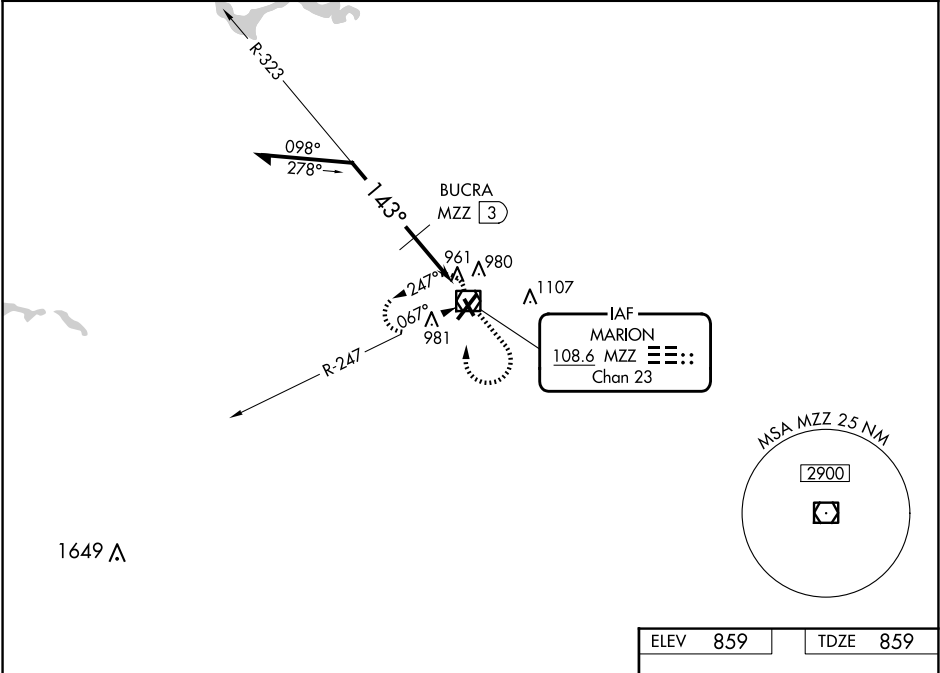
VOR/DME MZZ	APP CRS	Rwy Idg	3456
108.6	143°	TDZE	859
Chan 23		Apt Elev	859

VOR RWY 15
MARION MUNI - MCKINNEY FLD (MZZ)

⚠ When local altimeter setting not received, use Fort Wayne Intl altimeter setting and increase all MDA 100 feet, increase S-15 Cat B/C/D visibility $\frac{1}{4}$ SM, increase Circling Cat B/C/D visibility $\frac{1}{2}$ SM; BUCRA fix minimums: increase S-15 Cat C/D visibility $\frac{3}{8}$ SM, increase Circling Cat C/D visibility $\frac{1}{2}$ SM. Rwy 15 helicopter visibility reduction below 1 SM NA. Circling Rwy 15 NA at night. Straight-in Rwy 15 NA at night.

MISSED APPROACH:
Climb to 2400 then right turn direct MZZ VOR/DME and hold.

AWOS-3 108.6	GRISSEM APP CON ★ 121.05 338.275	CLNC DEL 120.0	UNICOM 122.7 (CTAF) 0
-----------------	-------------------------------------	-------------------	--------------------------



Remain within 10 NM

MZZ VOR/DME

2400

BUCRA MZZ 3

*1600 when using Fort Wayne altimeter setting.

143°

1500

2.9 NM

CATEGORY	A	B	C	D
S-15	1500-1	641 (700-1)	1500-1 $\frac{3}{4}$ 641 (700-1 $\frac{3}{4}$)	1500-2 641 (700-2)
CIRCLING	1500-1	641 (700-1)	1500-1 $\frac{7}{8}$ 641 (700-1 $\frac{7}{8}$)	1500-2 641 (700-2)
BUCRA FIX MINIMUMS				
S-15	1240-1	381 (400-1)	1240-1 $\frac{1}{4}$ 381 (400-1 $\frac{1}{4}$)	
CIRCLING	1300-1 441 (500-1)	1320-1 461 (500-1)	1420-1 $\frac{1}{2}$ 561 (600-1 $\frac{1}{2}$)	1500-2 641 (700-2)

ELEV 859

TDZE 859

143°

22

15

6011 X 100

3456 X 100

923

4

33

HIRL Rwy 4-22 0

MIRL Rwy 15-33 0

REIL Rws 15, 22, and 33 0

EC-2, 10 JUL 2025 to 07 AUG 2025

EC-2, 10 JUL 2025 to 07 AUG 2025