

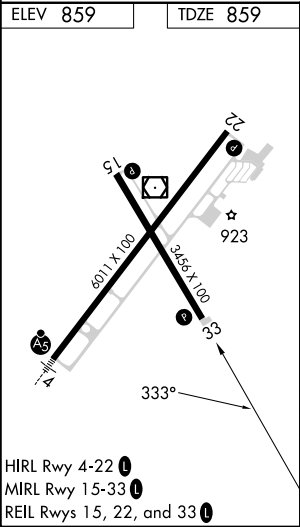
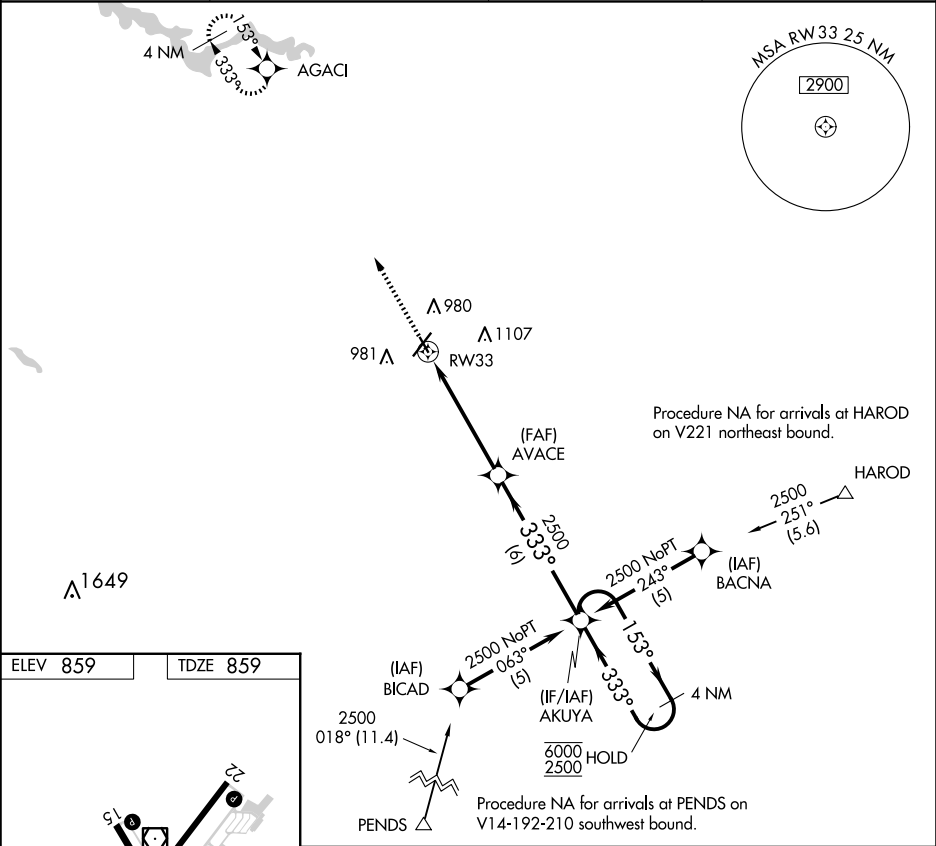
APP CRS	Rwy Idg	3456
333°	TDZE	859
	Apt Elev	859



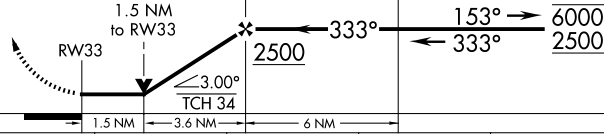

RNAV (GPS) RWY 33

MARION MUNI - MCKINNEY FLD (MZZ)

RNP APCH - GPS.	MISSED APPROACH: Climb to 2500 direct AGACI and hold.
<div><div></div><div>Rwy 33 helicopter visibility reduction below ¾ SM NA. Circling Rwy 15 NA at night.</div></div>	

AWOS-3 108.6	GRISSEM APP CON ★ 121.05 338.275	CLNC DEL 120.0	UNICOM 122.7 (CTAF) 0
-----------------	-------------------------------------	-------------------	--------------------------



2500	AGACI	VGSI and descent angle not coincident (VGSI Angle 4.00/TCH 38).		4 NM Holding Pattern	
		AVACE	AKUYA		
					
CATEGORY	A		B	C	D
LNAV MDA	1340-1 481 (500-1)		1340-1 $\frac{3}{8}$ 481 (500-1 $\frac{3}{8}$ )		
 CIRCLING	1340-1 481 (500-1)		1420-1 $\frac{1}{2}$ 561 (600-1 $\frac{1}{2}$ )		1500-2 641 (700-2)