

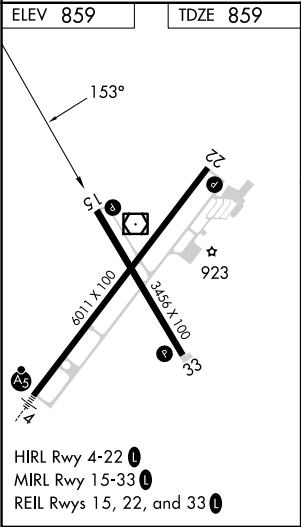
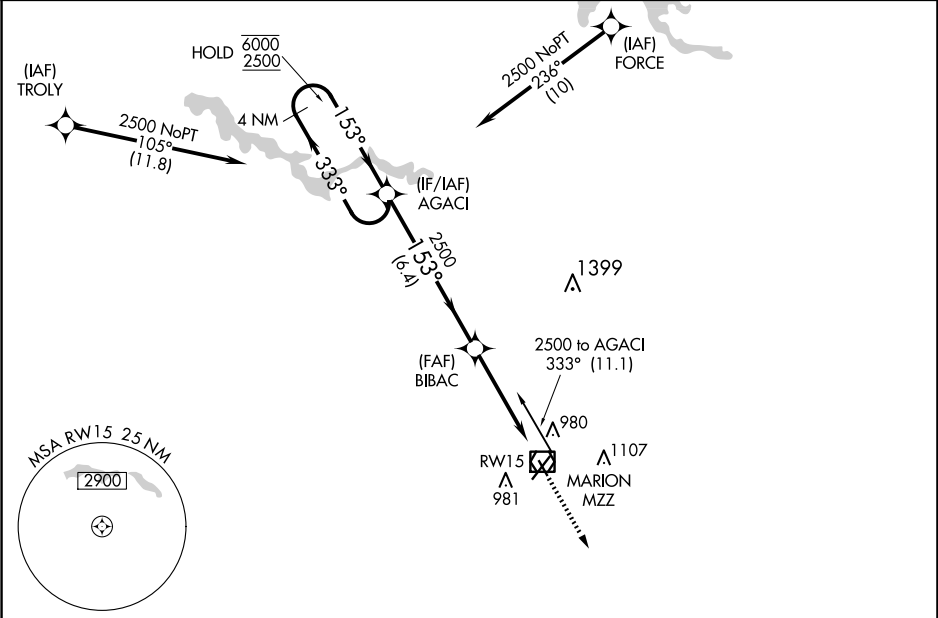



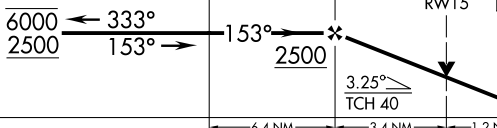


APP CRS	Rwy Idg	3456
153°	TDZE	859
	Apt Elev	859

RNAV (GPS) RWY 15

MARION MUNI - MCKINNEY FLD (MZZ)

RNP APCH - GPS.		MISSED APPROACH: Climb to 2500 direct AKUYA and hold.	
	Rwy 15 helicopter visibility reduction below ¾ SM NA. Circling Rwy 15 NA at night.		
AWOS-3 108.6	GRISSOM APP CON ★ 121.05 338.275	CLNC DEL 120.0	UNICOM 122.7 (CTAF) 



4 NM Holding Pattern				2500	AKUYA 
				1.2 NM to RWY15	RWY15 
				3.25° TCH 40	
CATEGORY	A	B	C	D	
LNAV MDA	1300-1	441 (500-1)	1300-1⅓	441 (500-1⅓)	
 CIRCLING	1300-1 441 (500-1)	1320-1 461 (500-1)	1420-1½ 561 (600-1½)	1500-2 641 (700-2)	

EC-2, 10 JUL 2025 to 07 AUG 2025

EC-2, 10 JUL 2025 to 07 AUG 2025