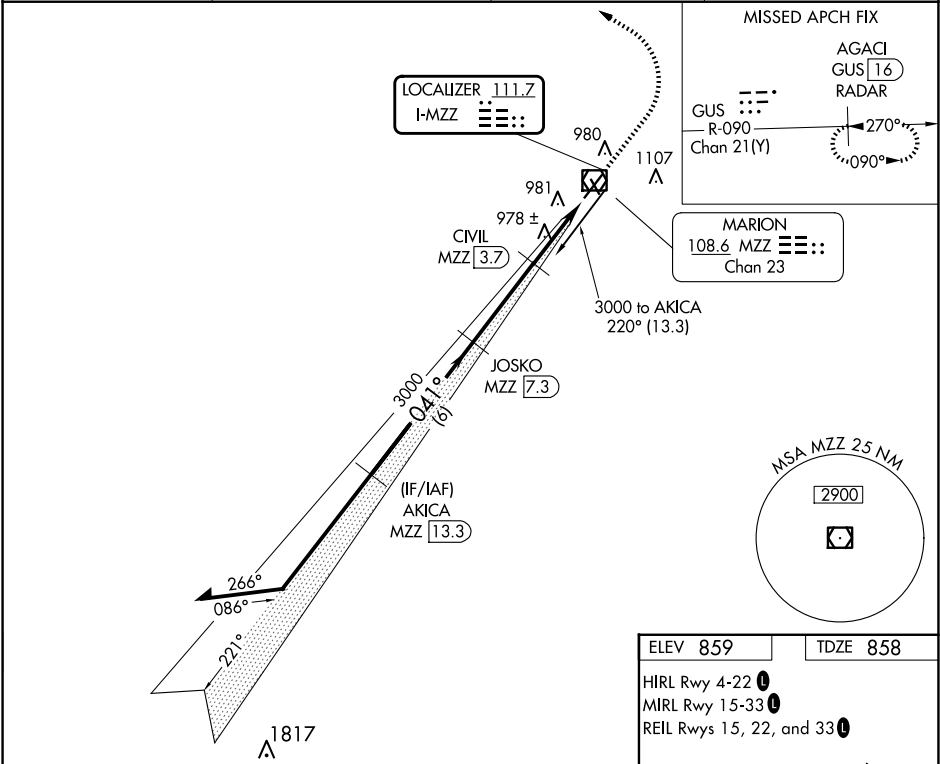


LOC I-MZZ 111.7	APP CRS 041°	Rwy Ldg TDZE Apt Elev 6011 858 859
---------------------------	------------------------	--

ILS or LOC RWY 4
MARION MUNI - MCKINNEY FLD (MZZ)

DME required. ▼ DME from MZZ VOR/DME. Simultaneous reception of I-MZZ and MZZ DME required. For inop ALS, increase S-LOC 4 Cats C and D visibility to 1½ SM. Circling Rwy 15 NA at night. ▲ NA		MALSR ⬆️	MISSED APPROACH: Climb to 2500 then climbing left turn to 4000 on heading 320° to intercept GUS VORTAC R-090 to AGACI/ GUS VORTAC 16 DME/RADAR and hold.
AWOS-3 108.6	GRISSEM APP CON ★ 121.05 338.275	CLNC DEL 120.0	UNICOM 122.7 (CTAF) 0



Remain within 10 NM		AKICA MZZ 13.3	JOSKO MZZ 7.3	2500	4000	GUS R-090	AGACI GUS 16 RADAR
3000		221°	041°	041°	3000	1860	1817
GS 3.00° TCH 52		6 NM	3.6 NM	1.9 NM	1.1 NM		
CATEGORY	A	B	C	D			
S-ILS 4	1058-½		200 (200-½)				
S-LOC 4	1260-½	402 (500-½)	1260-¾	402 (500-¾)			
CIRCLING	1300-1 441 (500-1)	1320-1 461 (500-1)	1420-1½ 561 (600-1½)	1500-2 641 (700-2)			

ELEV 859	TDZE 858
HIRL Rwy 4-22 0	
MIRL Rwy 15-33 0	
REIL Rwy 15, 22, and 33 0	
FAF to MAP 6.6 NM	
Knots	60 90 120 150 180
Min:Sec	6:34 4:22 3:17 2:37 2:11

EC-2, 10 JUL 2025 to 07 AUG 2025

EC-2, 10 JUL 2025 to 07 AUG 2025