

PORTLAND, OREGON

AL-5063 (FAA)

25107

WAAS CH 69502 W13A	APP CRS 127°	Rwy Idg 6600 TDZE 203 Apt Elev 208
----------------------------------------	------------------------	---------------------------------------------------------------

RNAV (GPS) RWY 13R
PORTLAND-HILLSBORO (HIO)

RNP APCH.

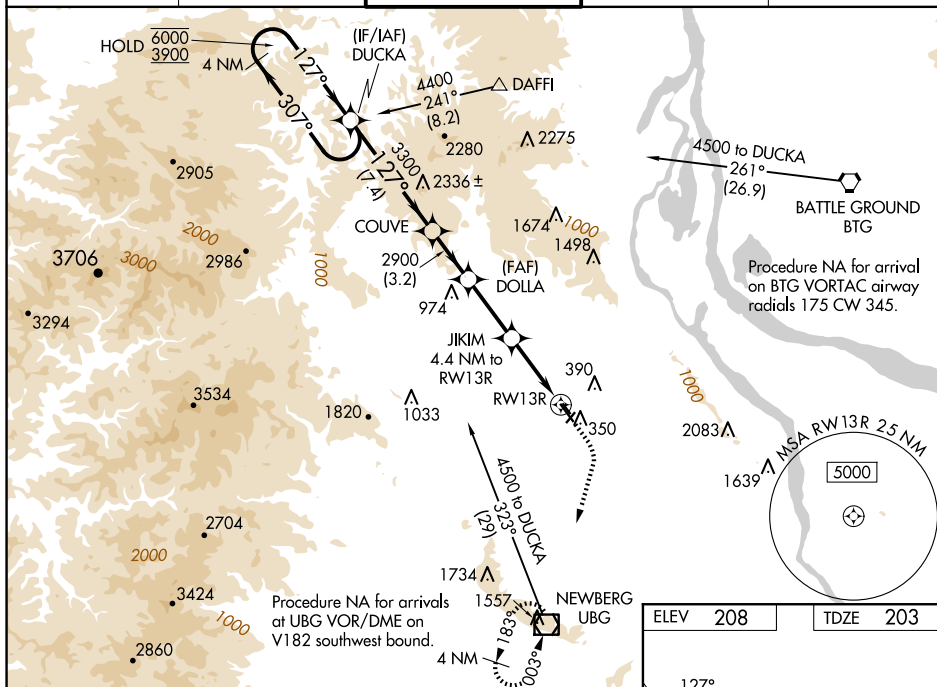
- T** Circling to Rwy 13L-31R NA at night. For uncompensated Baro-VNAV systems, LNAV/VNAV NA below -18°C or above 54°C. For inop ALS, increase LNAV
A Cat A/B visibility to RVR 5500 and Cat C/D to 1 3/8 SM.
#RVR 1800 authorized with use of FD or AP or HUD to DA.

MALSR



MISSED APPROACH: Climb to 1000 then climbing right turn to 3000 direct UBG VOR/DME and hold. Continue climb-in-hold to 3000.

ATIS 127.65	PORTLAND APP CON 126.0 269.175	HILLSBORO TOWER ★ 119.3 (CTAF) 0 239.3	GND CON 121.7	UNICOM 122.95
----------------	-----------------------------------	-------------------------------------------	------------------	------------------



4 NM Holding Pattern

DUCKA

COUVE

DOLLA

JKLIM

RWY 13R

***1.3 NM to RWY 13R**

***1660**

7.4 NM

3.2 NM

3.9 NM

3.1

1.3

GP 3.00° TCH 48

6000 ← 307°

3900 → 127°

2900

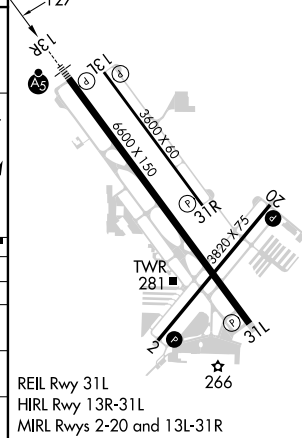
2900

2900

4.4 NM to RWY 13R

***RNAV only.**

CATEGORY	A	B	C	D
LPV DA#		403/24	200 (200-½)	
LNAV/VNAV DA		661/45	458 (500-¾)	
LNAV MDA	660/40	457 (500-¾)	660/50	457 (500-1)
CIRCLING	680-1 472 (500-1)	720-1 512 (600-1)	720-1½ 512 (600-1½)	980-2½ 772 (800-2½)



PORTLAND, OREGON

Amdt 3 26MAR20

45°33'N-122°57'W

PORTLAND-HILLSBORO (HIO)

RNAV (GPS) RWY 13R

NW-1, 10 JUL 2025 to 07 AUG 2025

NW-1, 10 JUL 2025 to 07 AUG 2025