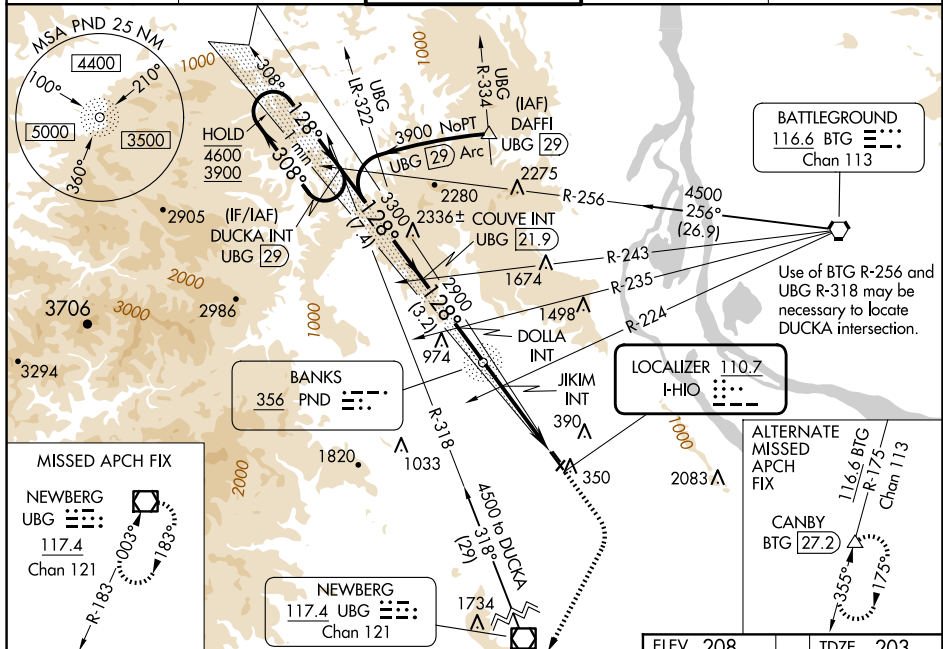


LOC I-HIO <u>110.7</u>	APP CRS 128°	Rwy Idg 6600 TDZE 203 Apt Elev 208
----------------------------------	------------------------	---

ILS or LOC RWY 13R
PORTLAND-HILLSBORO (HIO)

	<p>Circling to Rwy 13L, 31R NA at night. Inop table does not apply to 5-LOC Rwy 13R all Cats. For inop ALS, increase JKIM fix minimums Cat C/D visibility to 1 3/8 SM.</p>	<p>MALSR</p>	<p>MISSED APPROACH: Climb to 1000 then climbing right turn to 3000 direct UBG VOR/DME and hold. Continue climb-in-hold to 3000.</p>
--	--	--------------	---

ATIS 127.65	PORTLAND APP CON 126.0 269.175	HILLSBORO TOWER ★ 119.3(CTAF) 0 239.3	GND CON 121.7	UNICOM 122.95
----------------	-----------------------------------	--	------------------	------------------



DUCKA INT UBG [29] COUVE INT UBG [21.9] DOLLA INT 2900 JIKIM INT 2900

One Minute Holding Pattern

4600 ← 308° 3900 128° →

GS 3.00° TCH 48

7.4 NM 3.2 NM 3.9 NM 4.4 NM

*LOC only.

CATEGORY	A	B	C	D
S-ILS 13R	403/24 200 (200-½)			
S-LOC 13R	1660/60 1457 (1500-1¼)	1660-1½ 1457 (1500-1½)	1660-3 1457 (1500-3)	
C CIRCLING	1660-1¼ 1452 (1500-1¼)	1660-1½ 1452 (1500-1½)	1660-3 1452 (1500-3)	

JIKIM FIX MINIMUMS (DUAL VOR RECEIVERS REQUIRED)

S-LOC 13R	680/24 477 (500-½)	680/50 477 (500-1)
C CIRCLING	680-1 472 (500-1)	720-1 512 (600-1)
	720-1½ 512 (600-1½)	980-2½ 772 (800-2½)

REIL Rwy 31L
HIRL Rwy 13R-31L
MIRL Rwy 2-20 and 13L-31R

FAF to MAP 8.3 NM

Knots	60	90	120	150	180
Min:Sec	8:18	5:32	4:09	3:19	2:44