

(CANBY2.CANBY) 23334
CANBY TWO DEPARTURE

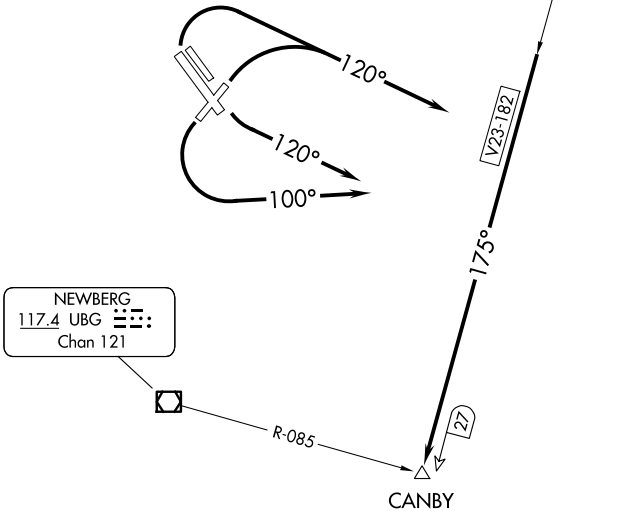
AL-5063 (FAA)

PORTLAND-HILLSBORO (HIO)
PORTLAND, OREGON

ATIS
127.65
GND CON
121.7
HILLSBORO TOWER ★
119.3 (CTAF) 239.3
PORTLAND DEP CON
126.0 269.175

BATTLEGROUND
116.6 BTG
Chan 113

TOP ALTITUDE:
ASSIGNED BY ATC



TAKEOFF MINIMUMS

- Rwys 2: Standard with minimum climb of 305' per NM to 2700.
- Rwys 13L/R: Standard with minimum climb of 235' per NM to 1500.
- Rwy 20: Standard.
- Rwys 31L/R: Standard with minimum climb of 280' per NM to 2700.

NOTE: Chart not to scale.



DEPARTURE ROUTE DESCRIPTION

TAKEOFF RUNWAYS 2, 31L/R: Climbing right turn heading 120°, thence. . . .

TAKEOFF RUNWAYS 13L/R: Climbing left turn heading 120°, thence. . . .

TAKEOFF RUNWAY 20: Climbing left turn heading 100°, thence. . . .

. . . .intercept BTG VORTAC R-175 to CANBY. Then on assigned route.

Maintain ATC assigned altitude.