

SE-1, 10 JUL 2025 to 07 AUG 2025

JACKSON, TENNESSEE

AL-5062 (FAA)

25107

VOR/DME MKL <b>114.85</b> Chan <b>95</b> (Y)	APP CRS <b>028°</b>	Rwy Idg <b>6005</b> TDZE <b>433</b> Apt Elev <b>433</b>
--	------------------------	---

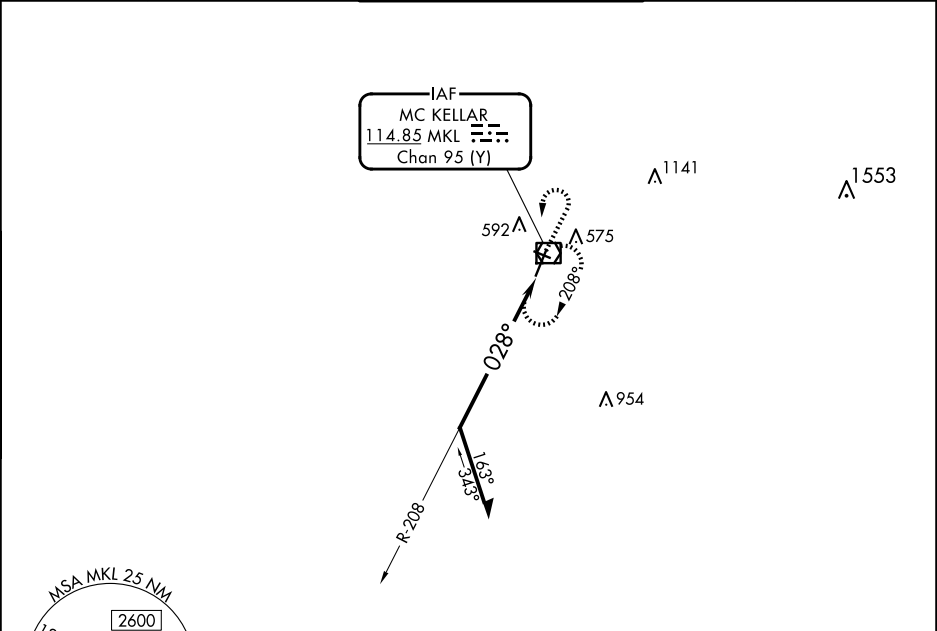
VOR RWY 2  
JACKSON RGNL (MKL)

**⚠** Rwy 2 helicopter visibility reduction below ¾ SM NA.  
For inop ALS, increase S-2 Cat A/B visibility to 1 SM.

MALSR

MISSED APPROACH: Climb to 1700 then climbing left turn to 2200 direct MKL VOR/DME and hold, continue climb-in-hold to 2200.

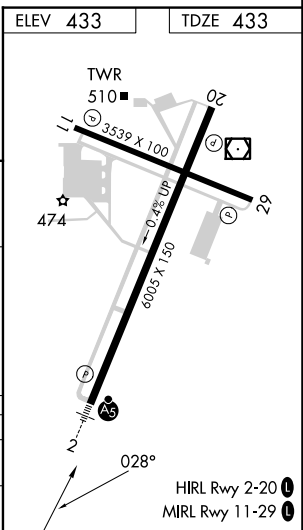
ASOS <b>119.325</b>	MEMPHIS CENTER <b>134.65 316.15</b>	JACKSON TOWER ★ <b>127.15</b> (CTAF) <b>0 249.95</b>	GND CON <b>120.9</b>	UNICOM <b>122.95</b>
------------------------	--	---	-------------------------	-------------------------



Remain within 10 NM

	1700	2200	MKL
	↑	↪	

CATEGORY	A	B	C	D
S-2	1120-¾ 687 (700-¾)		1120-1½ 687 (700-1½)	
<b>C</b> CIRCLING	1120-1 687 (700-1)		1120-2 687 (700-2)	1120-2¼ 687 (700-2¼)



SE-1, 10 JUL 2025 to 07 AUG 2025