

WAAS CH 40312 W20A	APP CRS 203°	Rwy Ldg 6005 TDZE 418 Apt Elev 433
--	------------------------	---

RNAV (GPS) RWY 20

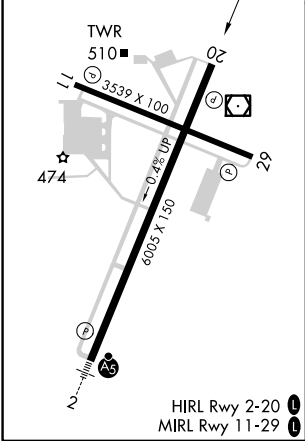
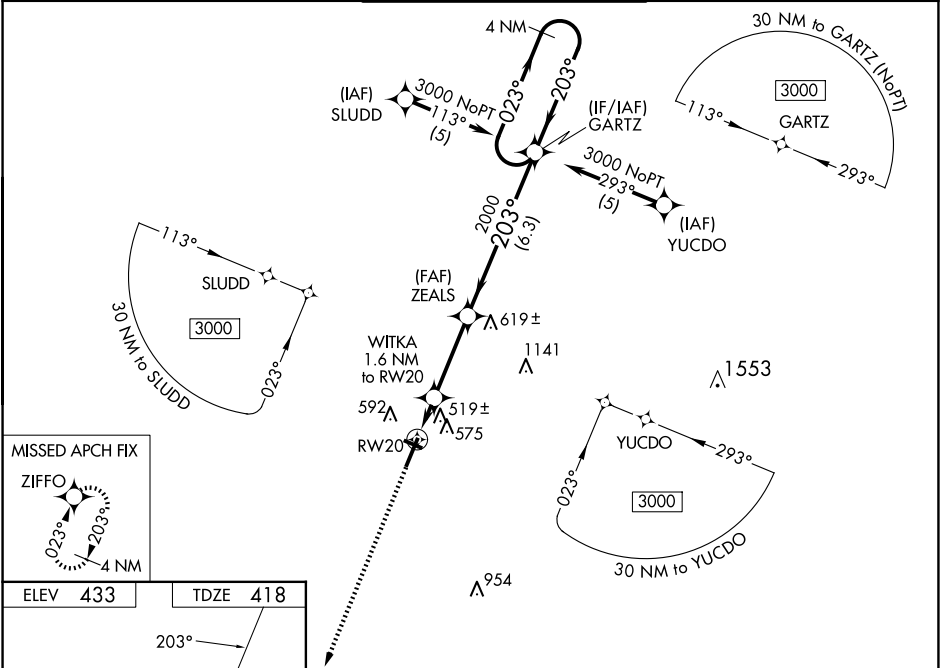
JACKSON RGNL (MKL)


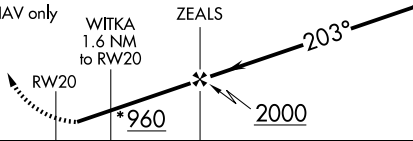
RNP APCH - GPS

▼ Rwy 20 helicopter visibility reduction below ¾ SM NA. For uncompensated Baro-VNAV systems, LNAV/VNAV NA below -15°C or above 48°C. Baro-VNAV NA when using Dyersburg altimeter setting. When local altimeter setting not received, use Dyersburg altimeter setting: increase LPV DA to 802 feet and visibility all Cats ½ SM; increase LNAV/VNAV DA to 910 feet and visibility all Cats ¼ SM; increase all MDA 100 feet and visibility LNAV Cat C and D and Circling Cat C ½ SM, and Circling Cat D ½ SM.

MISSED APPROACH:
Climb to 3000 direct
ZIFFO and hold.

ASOS 119.325	MEMPHIS CENTER 134.65 316.15	JACKSON TOWER ★ 127.15 (CTAF) 0 249.95	GND CON 120.9	UNICOM 122.95
------------------------	--	--	-------------------------	-------------------------



3000 ↑	ZIFFO 	VGSI and RNAV glidepath not coincident (VGSI Angle 3.00/TCH 46).				4 NM Holding Pattern
* LNAV only	WITKA 1.6 NM to RW20		ZEALS	GARTZ	023° → 3000 ← 203°	
				GP 3.00° TCH 50		
CATEGORY		A	B	C	D	
LPV	DA	710-1		292 (300-1)		
LNAV/ VNAV	DA	818-1½ 400 (400-1½)				
LNAV MDA	780-1 362 (400-1)				780-1¼ 362 (400-1¼)	
CIRCLING	900-1 467 (500-1)		920-1 487 (500-1)	960-1½ 527 (600-1½)	1100-2 667 (700-2)	

SE-1, 10 JUL 2025 to 07 AUG 2025

SE-1, 10 JUL 2025 to 07 AUG 2025