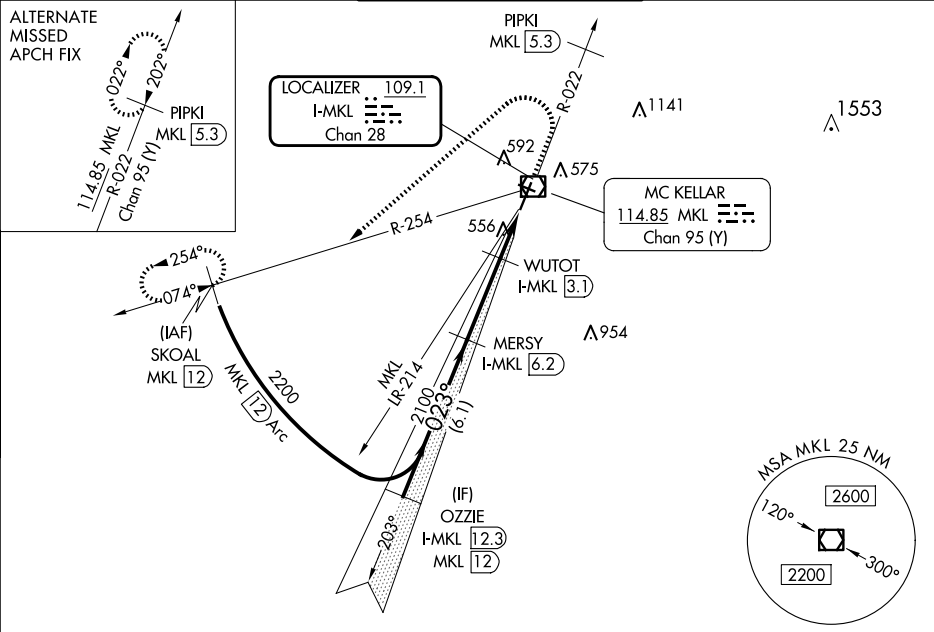


LOC/DME I-MKL 109.1 Chan 28	APP CRS 023°	Rwy Ldg 6005 TDZE 433 Apt Elev 433
---	------------------------	---

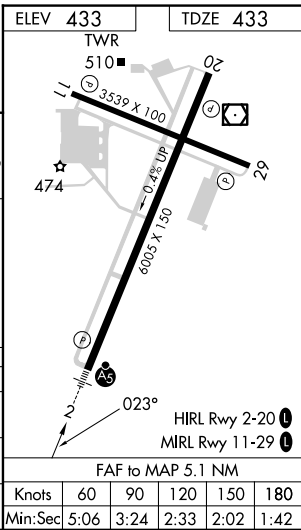
ILS or LOC RWY 2
JACKSON RGNL (MKL)

DME required. RADAR required for procedure entry.	MALS R	MISSED APPROACH: Climb to 1000 then climbing left turn to 2200 on heading 230° and MKL VOR/DME R-254 to SKOAL/MKL 12 DME and hold.
▼ Rwy 2 helicopter visibility reduction below ¾ SM NA. For inop ALS, increase S-LOC 2 Cat A/B visibility to 1 SM and Cat C/D visibility 1½ SM.	AS	

ASOS 119.325	MEMPHIS CENTER 134.65 316.15	JACKSON TOWER ★ 127.15 (CTAF) 0 249.95	GND CON 120.9	UNICOM 122.95
------------------------	--	--	-------------------------	-------------------------



VGSI and ILS glidepath not coincident (VGSI Angle 3.00/TCH 57).					1000 ↑	2200 hdg 230°	MKL R-254	SKOAL MKL 12
<p>Diagram details: The approach path starts at 2200 feet at the OZZIE I-MKL (12.3 NM from the start). It descends to 2100 feet at the MERSY I-MKL (6.2 NM from the start). The path then descends to 1100 feet at the WUTOT I-MKL (3.1 NM from the start). The path continues to 1100 feet at the I-MKL (2.3 NM from the start). The path then descends to 1100 feet at the I-MKL (1.2 NM from the start). The path ends at 1100 feet at the I-MKL (1.1 NM from the start). The diagram also shows a 023° heading and a 2100 foot altitude. The diagram includes a scale bar with distances of 6.1 NM, 3.1 NM, 0.8, and 1.1. The diagram also shows a 2100 foot altitude and a 1100 foot altitude. The diagram includes a scale bar with distances of 6.1 NM, 3.1 NM, 0.8, and 1.1. The diagram also shows a 2100 foot altitude and a 1100 foot altitude. The diagram includes a scale bar with distances of 6.1 NM, 3.1 NM, 0.8, and 1.1. The diagram also shows a 2100 foot altitude and a 1100 foot altitude. The diagram includes a scale bar with distances of 6.1 NM, 3.1 NM, 0.8, and 1.1. The diagram also shows a 2100 foot altitude and a 1100 foot altitude. The diagram includes a scale bar with distances of 6.1 NM, 3.1 NM, 0.8, and 1.1. The diagram also shows a 2100 foot altitude and a 1100 foot altitude. The diagram includes a scale bar with distances of 6.1 NM, 3.1 NM, 0.8, and 1.1. The diagram also shows a 2100 foot altitude and a 1100 foot altitude. The diagram includes a scale bar with distances of 6.1 NM, 3.1 NM, 0.8, and 1.1. The diagram also shows a 2100 foot altitude and a 1100 foot altitude. The diagram includes a scale bar with distances of 6.1 NM, 3.1 NM, 0.8, and 1.1. The diagram also shows a 2100 foot altitude and a 1100 foot altitude. The diagram includes a scale bar with distances of 6.1 NM, 3.1 NM, 0.8, and 1.1. The diagram also shows a 2100 foot altitude and a 1100 foot altitude. The diagram includes a scale bar with distances of 6.1 NM, 3.1 NM, 0.8, and 1.1. The diagram also shows a 2100 foot altitude and a 1100 foot altitude. The diagram includes a scale bar with distances of 6.1 NM, 3.1 NM, 0.8, and 1.1. The diagram also shows a 2100 foot altitude and a 1100 foot altitude. The diagram includes a scale bar with distances of 6.1 NM, 3.1 NM, 0.8, and 1.1. The diagram also shows a 2100 foot altitude and a 1100 foot altitude. The diagram includes a scale bar with distances of 6.1 NM, 3.1 NM, 0.8, and 1.1. The diagram also shows a 2100 foot altitude and a 1100 foot altitude. The diagram includes a scale bar with distances of 6.1 NM, 3.1 NM, 0.8, and 1.1. The diagram also shows a 2100 foot altitude and a 1100 foot altitude. The diagram includes a scale bar with distances of 6.1 NM, 3.1 NM, 0.8, and 1.1. The diagram also shows a 2100 foot altitude and a 1100 foot altitude. The diagram includes a scale bar with distances of 6.1 NM, 3.1 NM, 0.8, and 1.1. The diagram also shows a 2100 foot altitude and a 1100 foot altitude. The diagram includes a scale bar with distances of 6.1 NM, 3.1 NM, 0.8, and 1.1. The diagram also shows a 2100 foot altitude and a 1100 foot altitude. The diagram includes a scale bar with distances of 6.1 NM, 3.1 NM, 0.8, and 1.1. The diagram also shows a 2100 foot altitude and a 1100 foot altitude. The diagram includes a scale bar with distances of 6.1 NM, 3.1 NM, 0.8, and 1.1. The diagram also shows a 2100 foot altitude and a 1100 foot altitude. The diagram includes a scale bar with distances of 6.1 NM, 3.1 NM, 0.8, and 1.1. The diagram also shows a 2100 foot altitude and a 1100 foot altitude. The diagram includes a scale bar with distances of 6.1 NM, 3.1 NM, 0.8, and 1.1. The diagram also shows a 2100 foot altitude and a 1100 foot altitude. The diagram includes a scale bar with distances of 6.1 NM, 3.1 NM, 0.8, and 1.1. The diagram also shows a 2100 foot altitude and a 1100 foot altitude. The diagram includes a scale bar with distances of 6.1 NM, 3.1 NM, 0.8, and 1.1. The diagram also shows a 2100 foot altitude and a 1100 foot altitude. The diagram includes a scale bar with distances of 6.1 NM, 3.1 NM, 0.8, and 1.1. The diagram also shows a 2100 foot altitude and a 1100 foot altitude. The diagram includes a scale bar with distances of 6.1 NM, 3.1 NM, 0.8, and 1.1. The diagram also shows a 2100 foot altitude and a 1100 foot altitude. The diagram includes a scale bar with distances of 6.1 NM, 3.1 NM, 0.8, and 1.1. The diagram also shows a 2100 foot altitude and a 1100 foot altitude. The diagram includes a scale bar with distances of 6.1 NM, 3.1 NM, 0.8, and 1.1. The diagram also shows a 2100 foot altitude and a 1100 foot altitude. The diagram includes a scale bar with distances of 6.1 NM, 3.1 NM, 0.8, and 1.1. The diagram also shows a 2100 foot altitude and a 1100 foot altitude. The diagram includes a scale bar with distances of 6.1 NM, 3.1 NM, 0.8, and 1.1. The diagram also shows a 2100 foot altitude and a 1100 foot altitude. The diagram includes a scale bar with distances of 6.1 NM, 3.1 NM, 0.8, and 1.1. The diagram also shows a 2100 foot altitude and a 1100 foot altitude. The diagram includes a scale bar with distances of 6.1 NM, 3.1 NM, 0.8, and 1.1. The diagram also shows a 2100 foot altitude and a 1100 foot altitude. The diagram includes a scale bar with distances of 6.1 NM, 3.1 NM, 0.8, and 1.1. The diagram also shows a 2100 foot altitude and a 1100 foot altitude. The diagram includes a scale bar with distances of 6.1 NM, 3.1 NM, 0.8, and 1.1. The diagram also shows a 2100 foot altitude and a 1100 foot altitude. The diagram includes a scale bar with distances of 6.1 NM, 3.1 NM, 0.8, and 1.1. The diagram also shows a 2100 foot altitude and a 1100 foot altitude. The diagram includes a scale bar with distances of 6.1 NM, 3.1 NM, 0.8, and 1.1. The diagram also shows a 2100 foot altitude and a 1100 foot altitude. The diagram includes a scale bar with distances of 6.1 NM, 3.1 NM, 0.8, and 1.1. The diagram also shows a 2100 foot altitude and a 1100 foot altitude. The diagram includes a scale bar with distances of 6.1 NM, 3.1 NM, 0.8, and 1.1. The diagram also shows a 2100 foot altitude and a 1100 foot altitude. The diagram includes a scale bar with distances of 6.1 NM, 3.1 NM, 0.8, and 1.1. The diagram also shows a 2100 foot altitude and a 1100 foot altitude. The diagram includes a scale bar with distances of 6.1 NM, 3.1 NM, 0.8, and 1.1. The diagram also shows a 2100 foot altitude and a 1100 foot altitude. The diagram includes a scale bar with distances of 6.1 NM, 3.1 NM, 0.8, and 1.1. The diagram also shows a 2100 foot altitude and a 1100 foot altitude. The diagram includes a scale bar with distances of 6.1 NM, 3.1 NM, 0.8, and 1.1. The diagram also shows a 2100 foot altitude and a 1100 foot altitude. The diagram includes a scale bar with distances of 6.1 NM, 3.1 NM, 0.8, and 1.1. The diagram also shows a 2100 foot altitude and a 1100 foot altitude. The diagram includes a scale bar with distances of 6.1 NM, 3.1 NM, 0.8, and 1.1. The diagram also shows a 2100 foot altitude and a 1100 foot altitude. The diagram includes a scale bar with distances of 6.1 NM, 3.1 NM, 0.8, and 1.1. The diagram also shows a 2100 foot altitude and a 1100 foot altitude. The diagram includes a scale bar with distances of 6.1 NM, 3.1 NM, 0.8, and 1.1. The diagram also shows a 2100 foot altitude and a 1100 foot altitude. The diagram includes a scale bar with distances of 6.1 NM, 3.1 NM, 0.8, and 1.1. The diagram also shows a 2100 foot altitude and a 1100 foot altitude. The diagram includes a scale bar with distances of 6.1 NM, 3.1 NM, 0.8, and 1.1. The diagram also shows a 2100 foot altitude and a 1100 foot altitude. The diagram includes a scale bar with distances of 6.1 NM, 3.1 NM, 0.8, and 1.1. The diagram also shows a 2100 foot altitude and a 1100 foot altitude. The diagram includes a scale bar with distances of 6.1 NM, 3.1 NM, 0.8, and 1.1. The diagram also shows a 2100 foot altitude and a 1100 foot altitude. The diagram includes a scale bar with distances of 6.1 NM, 3.1 NM, 0.8, and 1.1. The diagram also shows a 2100 foot altitude and a 1100 foot altitude. The diagram includes a scale bar with distances of 6.1 NM, 3.1 NM, 0.8, and 1.1. The diagram also shows a 2100 foot altitude and a 1100 foot altitude. The diagram includes a scale bar with distances of 6.1 NM, 3.1 NM, 0.8, and 1.1. The diagram also shows a 2100 foot altitude and a 1100 foot altitude. The diagram includes a scale bar with distances of 6.1 NM, 3.1 NM, 0.8, and 1.1. The diagram also shows a 2100 foot altitude and a 1100 foot altitude. The diagram includes a scale bar with distances of 6.1 NM, 3.1 NM, 0.8, and 1.1. The diagram also shows a 2100 foot altitude and a 1100 foot altitude. The diagram includes a scale bar with distances of 6.1 NM, 3.1 NM, 0.8, and 1.1. The diagram also shows a 2100 foot altitude and a 1100 foot altitude. The diagram includes a scale bar with distances of 6.1 NM, 3.1 NM, 0.8, and 1.1. The diagram also shows a 2100 foot altitude and a 1100 foot altitude. The diagram includes a scale bar with distances of 6.1 NM, 3.1 NM, 0.8, and 1.1. The diagram also shows a 2100 foot altitude and a 1100 foot altitude. The diagram includes a scale bar with distances of 6.1 NM, 3.1 NM, 0.8, and 1.1. The diagram also shows a 2100 foot altitude and a 1100 foot altitude. The diagram includes a scale bar with distances of 6.1 NM, 3.1 NM, 0.8, and 1.1. The diagram also shows a 2100 foot altitude and a 1100 foot altitude. The diagram includes a scale bar with distances of 6.1 NM, 3.1 NM, 0.8, and 1.1. The diagram also shows a 2100 foot altitude and a 1100 foot altitude. The diagram includes a scale bar with distances of 6.1 NM, 3.1 NM, 0.8, and 1.1. The diagram also shows a 2100 foot altitude and a 1100 foot altitude. The diagram includes a scale bar with distances of 6.1 NM, 3.1 NM, 0.8, and 1.1. The diagram also shows a 2100 foot altitude and a 1100 foot altitude. The diagram includes a scale bar with distances of 6.1 NM, 3.1 NM, 0.8, and 1.1. The diagram also shows a 2100 foot altitude and a 1100 foot altitude. The diagram includes a scale bar with distances of 6.1 NM, 3.1 NM, 0.8, and 1.1. The diagram also shows a 2100 foot altitude and a 1100 foot altitude. The diagram includes a scale bar with distances of 6.1 NM, 3.1 NM, 0.8, and 1.1. The diagram also shows a 2100 foot altitude and a 1100 foot altitude. The diagram includes a scale bar with distances of 6.1 NM, 3.1 NM, 0.8, and 1.1. The diagram also shows a 2100 foot altitude and a 1100 foot altitude. The diagram includes a scale bar with distances of 6.1 NM, 3.1 NM, 0.8, and 1.1. The diagram also shows a 2100 foot altitude and a 1100 foot altitude. The diagram includes a scale bar with distances of 6.1 NM, 3.1 NM, 0.8, and 1.1. The diagram also shows a 2100 foot altitude and a 1100 foot altitude. The diagram includes a scale bar with distances of 6.1 NM, 3.1 NM, 0.8, and 1.1. The diagram also shows a 2100 foot altitude and a 1100 foot altitude. The diagram includes a scale bar with distances of 6.1 NM, 3.1 NM, 0.8, and 1.1. The diagram also shows a 2100 foot altitude and a 1100 foot altitude. The diagram includes a scale bar with distances of 6.1 NM, 3.1 NM, 0.8, and 1.1. The diagram also shows a 2100 foot altitude and a 1100 foot altitude. The diagram includes a scale bar with distances of 6.1 NM, 3.1 NM, 0.8, and 1.1. The diagram also shows a 2100 foot altitude and a 1100 foot altitude. The diagram includes a scale bar with distances of 6.1 NM, 3.1 NM, 0.8, and 1.1. The diagram also shows a 2100 foot altitude and a 1100 foot altitude. The diagram includes a scale bar with distances of 6.1 NM, 3.1 NM, 0.8, and 1.1. The diagram also shows a 2100 foot altitude and a 1100 foot altitude. The diagram includes a scale bar with distances of 6.1 NM, 3.1 NM, 0.8, and 1.1. The diagram also shows a 2100 foot altitude and a 1100 foot altitude. The diagram includes a scale bar with distances of 6.1 NM, 3.1 NM, 0.8, and 1.1. The diagram also shows a 2100 foot altitude and a 1100 foot altitude. The diagram includes a scale</p>								



SE-1, 10 JUL 2025 to 07 AUG 2025

SE-1, 10 JUL 2025 to 07 AUG 2025