

WAAS
CH **97709**
W09A

APP CRS
089°

Rwy Idg
TDZE **385**
Apt Elev **387**

RNAV (GPS) RWY 9

HENDERSON CITY-COUNTY (EHR)

RNP APCH - GPS.

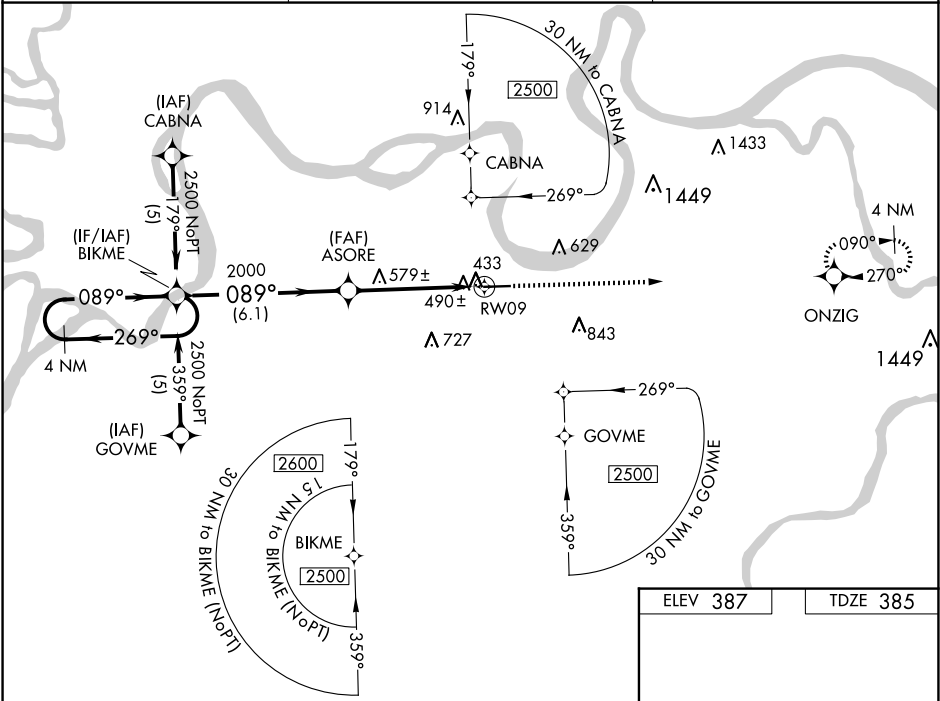
▼

▲

For uncompensated Baro-VNAV systems, LNAV/VNAV NA below -15°C or above 48° C. Rwy 9 helicopter visibility reduction below ¾ SM NA. Baro-VNAV and VDP NA when using Evansville altimeter setting. When local altimeter setting not received, use Evansville altimeter setting and increase all DA 41 feet and all MDA 60 feet and LPV all Cats, LNAV/VNAV all Cats and LNAV Cats C/D visibilities ¼ mile.

MISSED APPROACH:
Climb to 2500 direct ONZIG and hold.

AWOS-3PT 118.85	EVANSVILLE APP CON ★ 124.025 257.8	UNICOM 122.8 (CTAF) 0
---------------------------	--	--



4 NM Holding Pattern

VGSI and descent angles not coincident (VGSI Angle 3.00/TCH 43).

2500 ONZIG

GP 3.00° TCH 47

BIKME

ASORE

1.3 NM to RWY 9

RWY 9

6.1 NM

3.6 NM

1.3

CATEGORY	A	B	C	D
LPV DA	694-1 309 (400-1)			
LNAV/VNAV DA	774-1¼ 389 (400-1¼)			
LNAV MDA	840-1 455 (500-1)	840-1⅝ 455 (500-1⅝)	840-1½ 455 (500-1½)	

REIL Rwy 9 and 27 **0**

MIRL Rwy 9-27 **0**