

WAAS CH 77909 W27A	APP CRS 269°	Rwy Idg TDZE Apt Elev	5503 387 387
----------------------------------------	------------------------	-----------------------------	-----------------------------------------

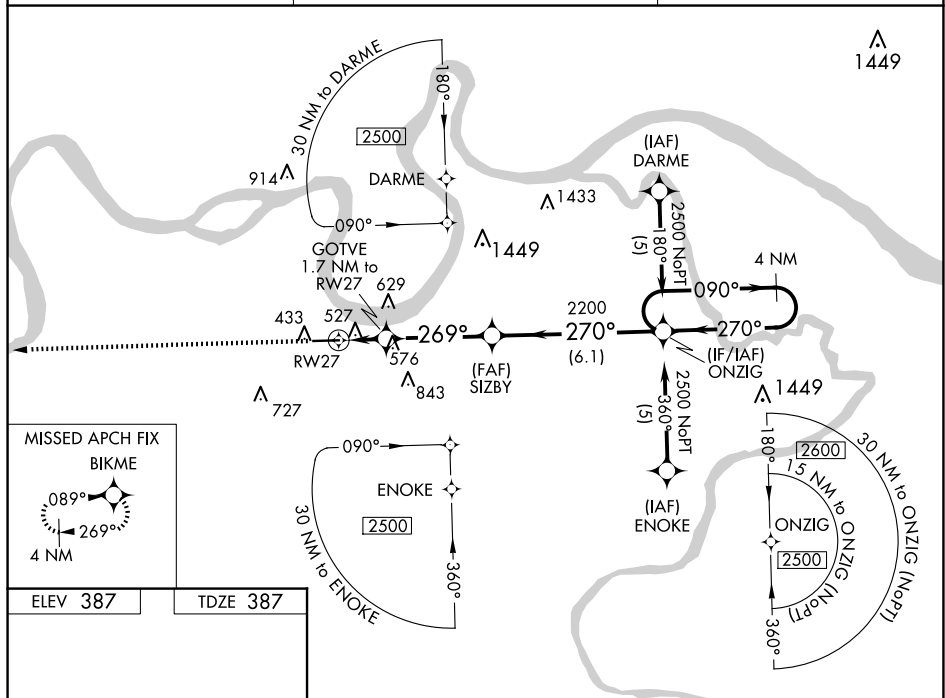
RNAV (GPS) RWY 27
HENDERSON CITY-COUNTY (EHR)

RNP APCH.

T Baro-VNAV NA when using Evansville altimeter setting. For uncompensated Baro-VNAV systems, LNAV/VNAV NA below -15°C or above 48°C. Rwy 27 helicopter visibility reduction below $\frac{3}{4}$ SM NA. When local altimeter setting not received, use Evansville altimeter setting and increase all DA 41 feet and all MDA 60 feet and LPV all Cts, LNAV/VNAV all Cts and LNAV Cots C/D visibilities $\frac{1}{4}$ mile.

MISSED APPROACH: Climb to 2500 direct BIKME and hold.

AWOS-3PT 118.85	EVANSVILLE APP CON ★ 124.025 257.8	UNICOM 122.8 (CTAF) 0
---------------------------	----------------------------------------------	----------------------------------------



2500 ↑	BIKME ✦				
-----------	------------	--	--	--	--

REIL Rwys 9 and 27 **L**
MIRL Rwy 9-27 **L**

SE-1, 10 JUL 2025 to 07 AUG 2025