

WAAS CH <b>60909</b> <b>W29A</b>	APP CRS <b>291°</b>	Rwy Idg <b>6525</b> TDZE <b>871</b> Apt Elev <b>871</b>
--	------------------------	---

RNAV (GPS) RWY 29

CENTRAL IL RGNL/BLOOMINGTON-NORMAL (BMI)

▼

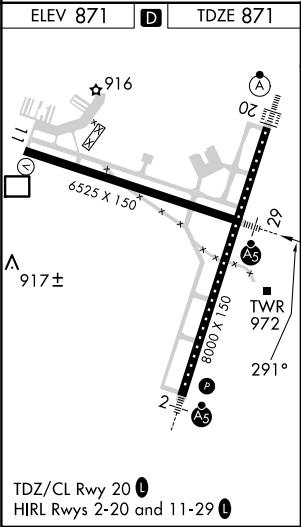
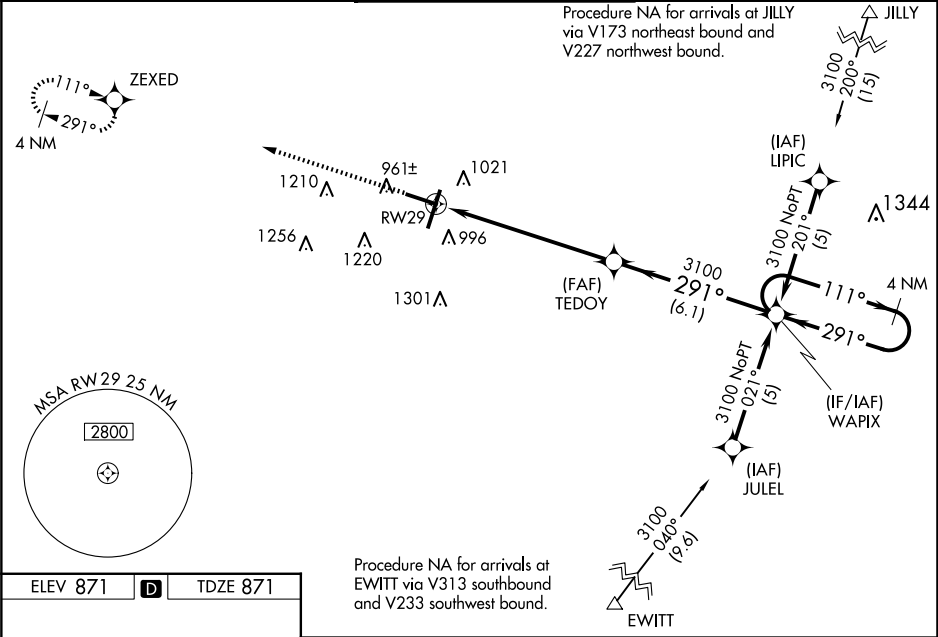
▲

For uncompensated Baro-VNAV systems, LNAV/VNAV NA below -16°C (4°F) or above 54°C (130°F). DME/DME RNP-0.3 NA. Baro-VNAV and VDP NA when using General Downing-Peoria Intl altimeter setting. When local altimeter setting not received, use General Downing-Peoria Intl altimeter setting: increase all DA 116 feet and all MDA 120 feet; increase LPV all Cats visibility to RVR 3500, LNAV/VNAV all Cats and LNAV Cats C/D visibility ¾ mile, and Circling Cats C/D visibility ¼ mile. For inoperative MALSRs when using General Downing-Peoria Intl Regional altimeter setting increase LPV all Cats visibility ½ mile, and LNAV Cat C/D visibility ¾ mile.

MALSR

MISSED APPROACH:  
Climb to 2500 direct ZEXED and hold.

ATIS <b>119.575</b>	SAINT LOUIS APP CON <b>128.725 256.9</b>	BLOOMINGTON TOWER ★ <b>124.6 (CTAF) 269.575</b>	GND CON <b>121.65</b>	UNICOM <b>122.95</b>
------------------------	---	--	--------------------------	-------------------------



2500 ZEXED

TEDOY

WAPIX

4 NM Holding Pattern

\*LNAV only

\*1.6 NM to RW29

3100

291°

111°

3100

GP 3.00°

TCH 56

CATEGORY	A	B	C	D
LPV DA	1121/24 250 (300-½)			
LNAV/VNAV DA	1304/50 433 (500-1)			
LNAV MDA	1460/24	589 (600-½)	1460-1¼	589 (600-1¼)
<b>C</b> CIRCLING	1460-1	589 (600-1)	1620-2¼ 749 (800-2¼)	1620-2½ 749 (800-2½)