

WAAS CH 99303 W20A	APP CRS 201°	Rwy Idg 8000 TDZE 871 Apt Elev 871
--	------------------------	---

RNAV (GPS) RWY 20

CENTRAL IL RGNL/BLOOMINGTON-NORMAL (BMI)

RNP APCH - GPS.

▼

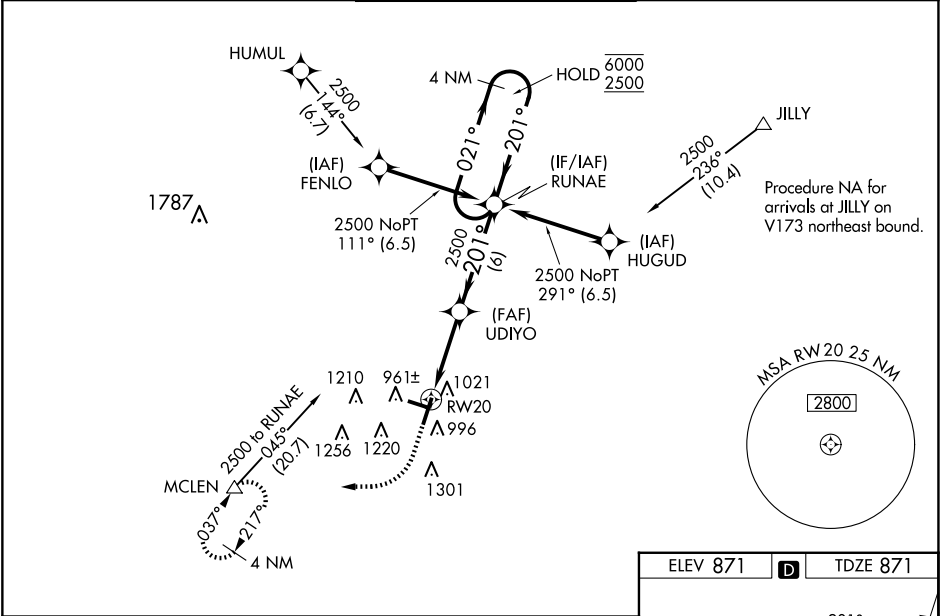
▲




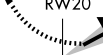
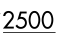
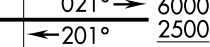
For uncompensated Baro-VNAV systems, LNAV/VNAV NA below -20°C or above 54°C. Baro-VNAV and VDP NA when using PIA altimeter setting. When local altimeter setting not received, use PIA altimeter setting: increase LPV DA to 1187 feet and all visibilities to RVR 2400; increase LNAV/VNAV DA to 1417 feet and all visibilities to RVR 6000; increase all MDAs 120 feet and LNAV visibility Cat C and D to RVR 5500 and Circling visibility Cat C and D ¼ SM. For inop ALS, increase LNAV Cat C and D visibility to RVR 6000. For inop ALS when using PIA altimeter setting, increase LPV all Cats visibility to RVR 4500.

ALS F-2

MISSED APPROACH:
Climb to 1500 then climbing right turn to 3000 direct MCLEN and hold.

ATIS 119.575	SAINT LOUIS APP CON 128.725 256.9	BLOOMINGTON TOWER ★ 124.6 (CTAF) 269.575	GND CON 121.65	UNICOM 122.95
------------------------	---	---	--------------------------	-------------------------



1500		3000		MCLEN	
					
		UDIYO		RUNAE	
		2500		4 NM Holding Pattern	
					
1.1		3.8 NM		6 NM	
CATEGORY		A		B	
LPV DA		1071/18		200 (200-½)	
LNAV/VNAV DA		1301/40		430 (500-¾)	
LNAV MDA		1280/24 409 (500-½)		1280/40 409 (500-¾)	
CIRCLING		1340-1 469 (500-1)		1620-2¼ 749 (800-2¼)	

