

WAAS
CH **97617**
W11A

APP CRS
111°

Rwy Idg
TDZE **871**
Apt Elev **871**

RNAV (GPS) RWY 11

CENTRAL IL RGNL/BLOOMINGTON-NORMAL (BMI)

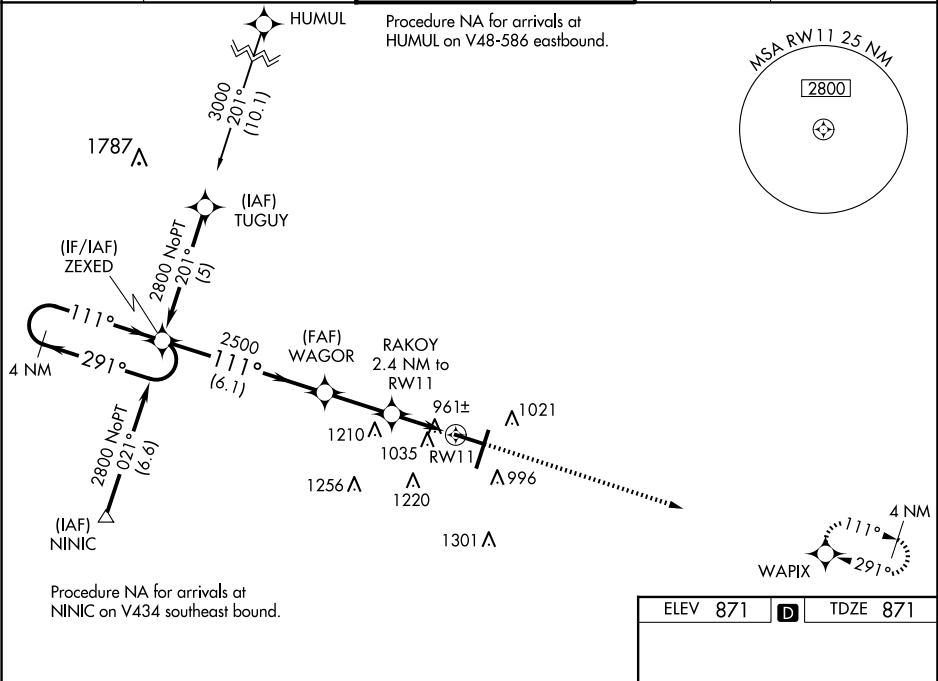
⚠

⚠

For uncompensated Baro-VNAV systems, LNAV/VNAV NA below -1.6°C (4°F) or above 54°C (130°F). DME/DME RNP-0.3 NA. Baro-VNAV and VDP NA when using General Downing-Peoria Intl altimeter setting. When local altimeter setting not received, use General Downing-Peoria Intl setting: increase all DA 116 feet and all MDA 120 feet; increase LPV all Cnts visibility ½ mile, LNAV/VNAV all Cnts and LNAV Cat C/D visibility ¾ mile, and Circling Cnts C/D visibility ¼ mile.

MISSED APPROACH:
Climb to 3100 direct
WAPIX and hold.

ATIS 119.575	SAINT LOUIS APP CON 128.725 256.9	BLOOMINGTON TOWER ★ 124.6 (CTAF) 0 269.575	GND CON 121.65	UNICOM 122.95
------------------------	---	--	--------------------------	-------------------------



4 NM Holding Pattern ZEXED

GP 3.00° TCH 43

2800

291°

111°

WAGOR

2500

RAKOY 2.4 NM to RW11

3100 WAPIX

*LNAV only

*1.2 NM to RW11

*1680

6.1 NM

2.5 NM

1.2

1.2

CATEGORY	A	B	C	D
LPV DA	1121-3/4 250 (300-3/4)			
LNAV/VNAV DA	1341-15/8 470 (500-15/8)			
LNAV MDA	1280-1 409 (500-1)	1280-1 1/4 409 (500-1 1/4)		
CIRCLING	1340-1 469 (500-1)	1620-2 1/4 749 (800-2 1/4)	1620-2 1/2 749 (800-2 1/2)	

ELEV 871 TDZE 871

111°

916

20

6525 X 150

8000 X 150

2

917±

TWR 972

TDZ/CL Rwy 20 0
HIRL Rwy 2-20 and 11-29 0