

LOC/DME I-BMI	APP CRS	Rwy Idg	6525
110.95	291°	TDZE	871
Chan 46 (Y)		Apt Elev	871

ILS or LOC RWY 29

CENTRAL IL RGNL/BLOOMINGTON-NORMAL (BMI)

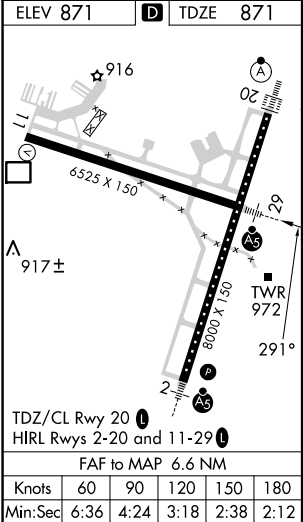
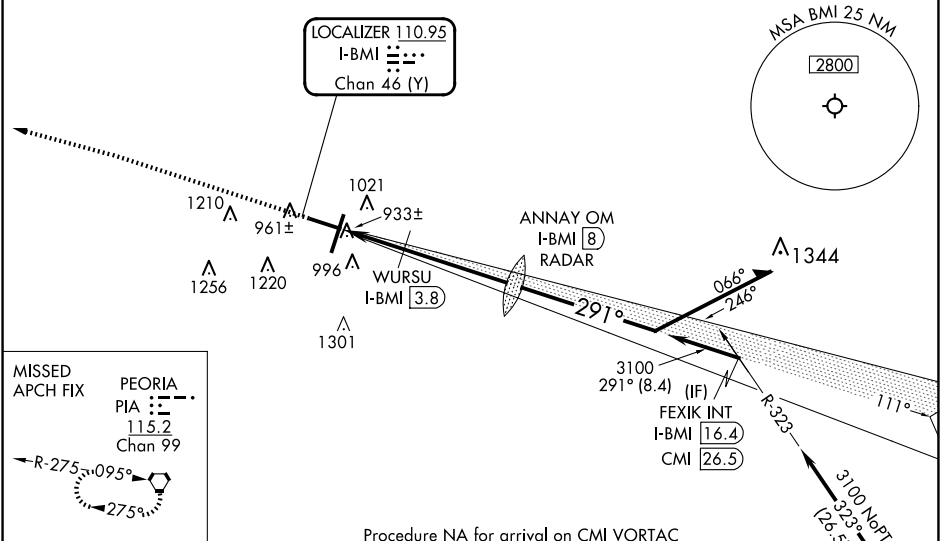
DME required. RADAR required for procedure entry at ANNAY OM.

VDP NA when using PIA altimeter setting. For inop ALS, increase S-LOC 29 Cats C and D visibility to RVR 5500. When local altimeter setting not received, use PIA altimeter setting: increase S-ILS 29 DA to 1187 feet; increase all MDAs 120 feet and S-LOC 29 visibility Cats C and D to RVR 5000 and Circling visibility Cats C and D ½ SM. For inop ALS when using PIA altimeter setting: increase S-ILS 29 visibility all Cats to RVR 4500 and S-LOC 29 visibility Cats C and D to 1½ SM. * RVR 1800 authorized with use of FD or AP or HUD to DA (NA when using PIA altimeter setting).

MALSR

MISSED APPROACH: Climb to 1500 then climbing left turn to 3000 direct PIA VORTAC and hold.

ATIS	SAINT LOUIS APP CON	BLOOMINGTON TOWER ★	GND CON	UNICOM
119.575	128.725 256.9	124.6 (CTAF) 269.575	121.65	122.95



airway radials 234 CW 006.

IAF

CHAMPAIGN
115.75 CMI
Chan 104 (Y)

Remain within 10 NM

WURSU
I-BMI 2.4
I-BMI 3.8
I-BMI 1.4

ANNAY OM
I-BMI 8
RADAR

3019

1700

291°

3100

GS 3.00°
TCH 56

CATEGORY	A	B	C	D
S-ILS 29 *	1071/24 200 (200-½)			
S-LOC 29	1240/24	369 (400-½)	1240/35	369 (400-¾)
CIRCLING	1340-1	469 (500-1)	1620-2¼ 749 (800-2¼)	1620-2½ 749 (800-2½)