

LOC/DME I-VSF  
**111.3**  
Chan **50**

APP CRS  
**051°**

Rwy Ldg  
TDZE **575**  
Apt Elev **578**

LOC RWY 5

HARTNESS STATE (SPRINGFIELD) (V'SF')

RNP APCH - GPS.  
DME required.

▼

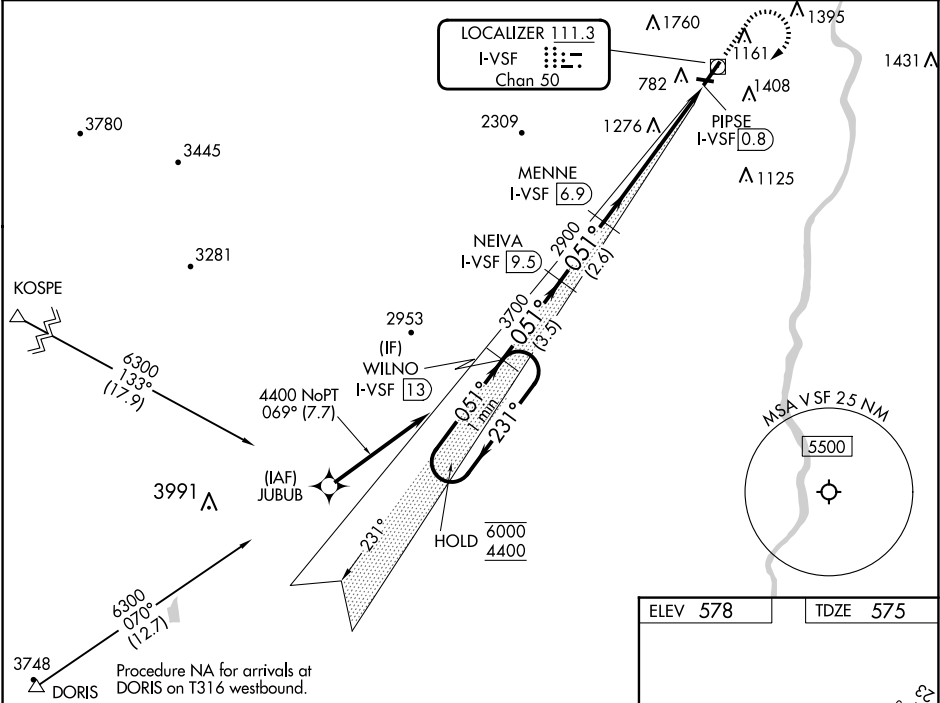
NA

❄️ -20°C

Rwy 5 helicopter visibility reduction below ¾ SM NA. When local altimeter setting not received, use LEB altimeter setting and increase all MDAs 60 feet.  
VDP NA when using LEB altimeter setting. Circling Rwy 11, 23, 29 NA at night.

MISSED APPROACH: Climb to 2000 then climbing right turn to 4400 direct WILNO/13 DME and hold.

ASOS <b>121.425</b>	BOSTON CENTER <b>134.7 269.475</b>	UNICOM <b>122.8 (CTAF)</b> 0
------------------------	---------------------------------------	---------------------------------



VGSI and descent angles not coincident (VGSI Angle 4.00/TCH 59).

One Minute Holding Pattern

WILNO I-VSF 13

NEIVA I-VSF 9.5

MENNE I-VSF 6.9

PIPSE I-VSF 0.8

I-VSF 3.4

3.50° TCH 59

2900

3700

051°

231°

6000

4400

3.5 NM

2.6 NM

3.5 NM

2.6 NM

CATEGORY	A	B	C	D
S-5	1760-1¼ 1185 (1200-1¼)	1760-1½ 1185 (1200-1½)	1760-3	1185 (1200-3)
CIRCLING	1760-1¼ 1182 (1200-1¼)	1760-1½ 1182 (1200-1½)	2600-3	2022 (2100-3)

ELEV 578

TDZE 575

WILNO I-VSF 13

LOC/DME

0.3% UP

5500 X 100

3000 X 75

11

29

051°

REIL Rwy 5

MIRL Rwy 5-23 and 11-29