

WAAS CH 58110 W36A	APP CRS 004°	Rwy Idg TDZE Apt Elev	6347 80 90
----------------------------------------	------------------------	-----------------------------	---------------------------------------

RNAV (GPS) RWY 36

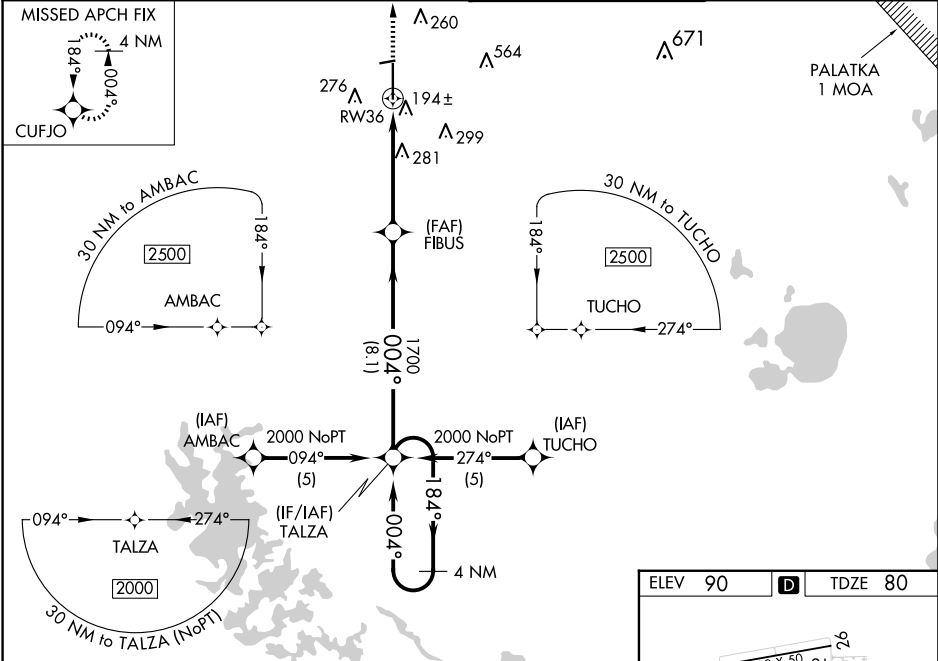
OCALA INTL-JIM TAYLOR FLD (OCF)

For uncompensated Baro-VNAV systems, LNAV/VNAV NA below -15°C (5°F) or above 48°C (118°F). DME/DME RNP-0.3 NA. When local altimeter setting not received, use Gainesville altimeter setting: Increase LPV DA to 361 feet, increase LNAV/VNAV DA to 644 feet and all MDAs 100 feet; increase LNAV/VNAV all Cats and LNAV visibility Cats C/D ¼ SM, increase Circling visibility Cat C ½ SM and Cat D ¼ SM. VDP and Baro-VNAV NA when using Gainesville altimeter setting. Inop table does not apply to LPV when using local altimeter setting. For inop MALSRS, increase LNAV Cats A and B visibility to 1 mile. For inop MALSRS when using Gainesville altimeter setting, increase LNAV Cats A and B visibility to 1 mile.

MALSRS

MISSED APPROACH:
Climb to 2100 direct CUFJO and hold.

ATIS 128.125	JACKSONVILLE APP CON 118.6 251.15	OCALA TOWER ★ 119.25 (CTAF) 0	GND CON 121.4
------------------------	---------------------------------------------	-----------------------------------------	-------------------------



4 NM Holding Pattern

TALZA

2000

184°

004°

GP 3.00° TCH 50

VGSI and RNAV glidepath not coincident (VGSI Angle 3.00/TCH 45).

FIBUS

1700

004°

1700

*1.4 NM to RW36

RW36

2100

CUFJO

*LNAV only.

8.1 NM

3.5 NM

1.4 NM

CATEGORY	A	B	C	D
LPV DA	280-¾ 200 (200-¾)			
LNAV/VNAV DA	563-1¼ 483 (500-1¼)			
LNAV MDA	540-¾ 460 (500-¾)			540-1 460 (500-1)
CIRCLING	600-1 510 (600-1)		760-1¾ 670 (700-1¾)	920-2¾ 830 (900-2¾)

OCALA, FLORIDA

Amdt 1A 20MAY21

OCALA INTL-JIM TAYLOR FLD (OCF)

RNAV (GPS) RWY 36