

24193

LOC I-OCF <u>111.5</u>	APP CRS 004°	Rwy Idg TDZE Apt Elev	6347 80 90
----------------------------------	------------------------	-----------------------------	---------------------------------------

ILS or LOC RWY 36
OCALA INTL-JIM TAYLOR FLD (OCF)

DME required.

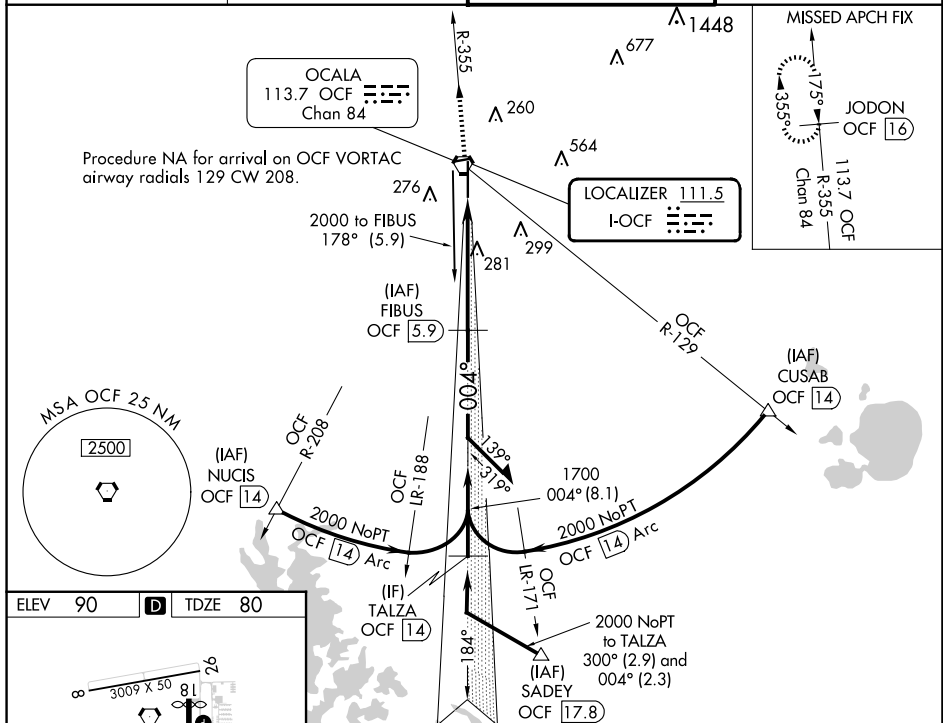
A DME from OCF VORTAC. DME use requires simultaneous reception of I-OCF and OCF DME. Inop table does not apply to S-ILS 36 all Cats. For inop ALS, increase S-LOC 36 Cats A and B visibility to 1 SM.

MALSR



MISSED APPROACH: Climb to 2000 on OCF VORTAC R-355 to JODON/OCF VORTAC 16 DME and hold.

ATIS 128.125	JACKSONVILLE APP CON 118.6 251.15	OCALA TOWER ★ 119.25 (CTAF) ①	GND CON 121.4
------------------------	---	---	-------------------------

[illegible]

OCALA, FLORIDA

Amdt 2 23FEB23

OCALA INTL-JIM TAYLOR FLD (OCF)

ILS or LOC RWY 36

29°10'N-82°13'W

SE-3, 10 JUL 2025 to 07 AUG 2025