

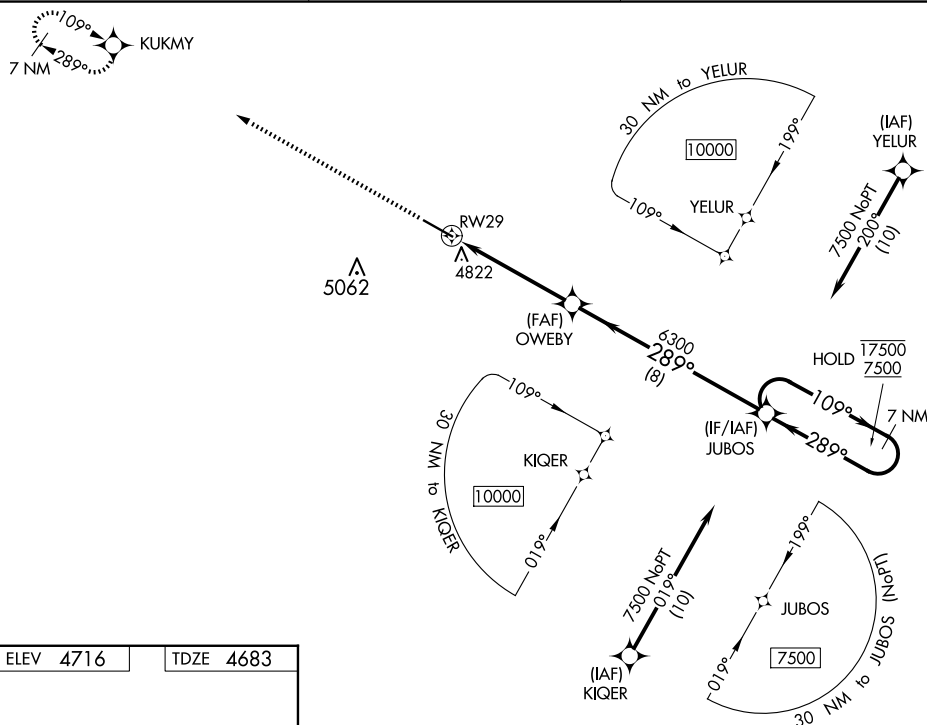
WAAS CH 45640 W29A	APP CRS 289°	Rwy Ldg 7001 TDZE 4683 Apt Elev 4716
--	------------------------	---

RNAV (GPS) RWY 29
COLORADO PLAINS RGNL (AKO)

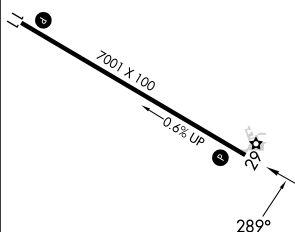
RNP APCH.

T For uncompensated Baro-VNAV systems, LNAV/VNAV
A NA below -22°C or above 54°C.

MISSED APPROACH: Climb to 7500 to KUKMY and hold.

ASOS
135.475DENVER CENTER
133.95 317.55UNICOM
122.8 (CTAF) **L**

ELEV	4716		TDZE	4683
------	------	--	------	------



MIRL Rwy 11-29 **L**
REFL Rwy 11 and 29 **L**

AKRON, COLORADO
Amdt 1A 15AUG19

The diagram illustrates the RNAV glidepath from runway RW29 to the JUBOS holding pattern. Key features include:

- Start Point:** RW29, located 1.2 NM from the start of the glidepath.
- Waypoint OWEBY:** Located 3.8 NM from RW29 and 6300 feet MSL. The glidepath angle here is 289°.
- JUBOS Holding Pattern:** Located 8 NM from OWEBY. The glidepath angle here is 109°.
- Altitudes:** The glidepath starts at 7500 feet MSL and descends to 7500 feet MSL at the JUBOS holding pattern.
- GP 3.00° TCH 52:** The glidepath gradient is 3.00% and the threshold crossing height is 52 feet AGL.

CATEGORY	A	B	C	D
LPV DA		4933-1	250 (300-1)	
RNAV/VNAV DA		4987-1	304 (300-1)	
RNAV MDA	5080-1	397 (400-1)	5080-1½	397 (400-1½)
CIRCLING	5140-1 424 (500-1)	5260-1 544 (600-1)	5420-2 704 (800-2)	5420-2¼ 704 (800-2¼)

40°11'N-103°13'W

COLORADO PLAINS RGNL (AKO)
RNAV (GPS) RWY 29