

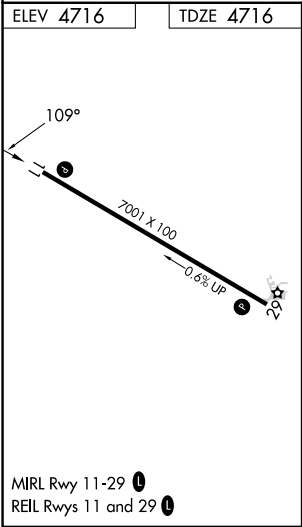
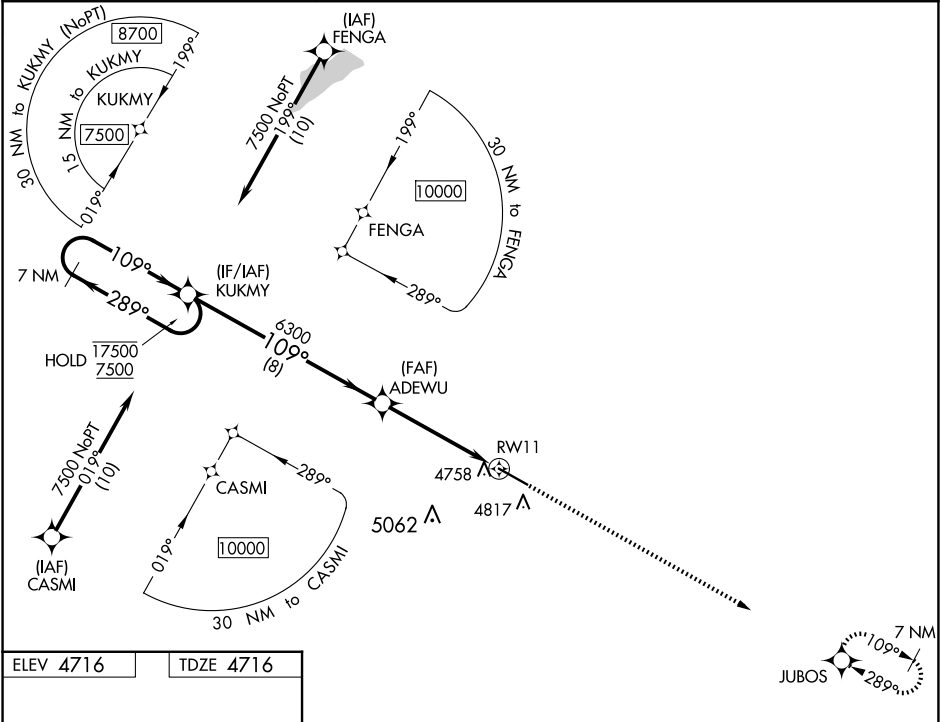
WAAS CH 82340 W11A	APP CRS 109°	Rwy Ldg TDZE 4716 Apt Elev 4716
--	------------------------	---



RNAV (GPS) RWY 11

COLORADO PLAINS RGNL (AKO)

RNP APCH	MISSED APPROACH: Climb to 7500 direct JUBOS and hold.
▼ Rwy 11 helicopter visibility reduction below ¾ SM NA. ▲ For uncompensated Baro-VNAV systems, LNAV/VNAV NA below -22°C or above 54°C.	

ASOS 135.475	DENVER CENTER 133.95 317.55	UNICOM 122.8 (CTAF) 0
------------------------	---------------------------------------	---------------------------------



7 NM Holding Pattern		VGSI and RNAV glidepath not coincident (VGSI Angle 3.00/TCH 44).		7500 ↑	JUBOS 
<div>17500 ← 289° 7500 → 109°</div> <div>GP 3.00° TCH 54</div>		KUKMY	ADEWU 6300	*LNNAV only	
		<div>109°</div> <div>6300</div>		<div>*0.8 NM to RW11</div> <div>RW11</div>	
		8 NM		4 NM	
				0.8	
CATEGORY	A	B	C	D	
LPV DA	4966-1 250 (300-1)				
LNNAV/ VNAV DA	4966-1 250 (300-1)				
LNNAV MDA	5020-1 304 (400-1)				
 CIRCLING	5140-1 424 (500-1)	5260-1 544 (600-1)	5420-2 704 (800-2)	5420-2¼ 704 (800-2¼)	