

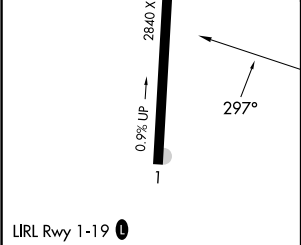
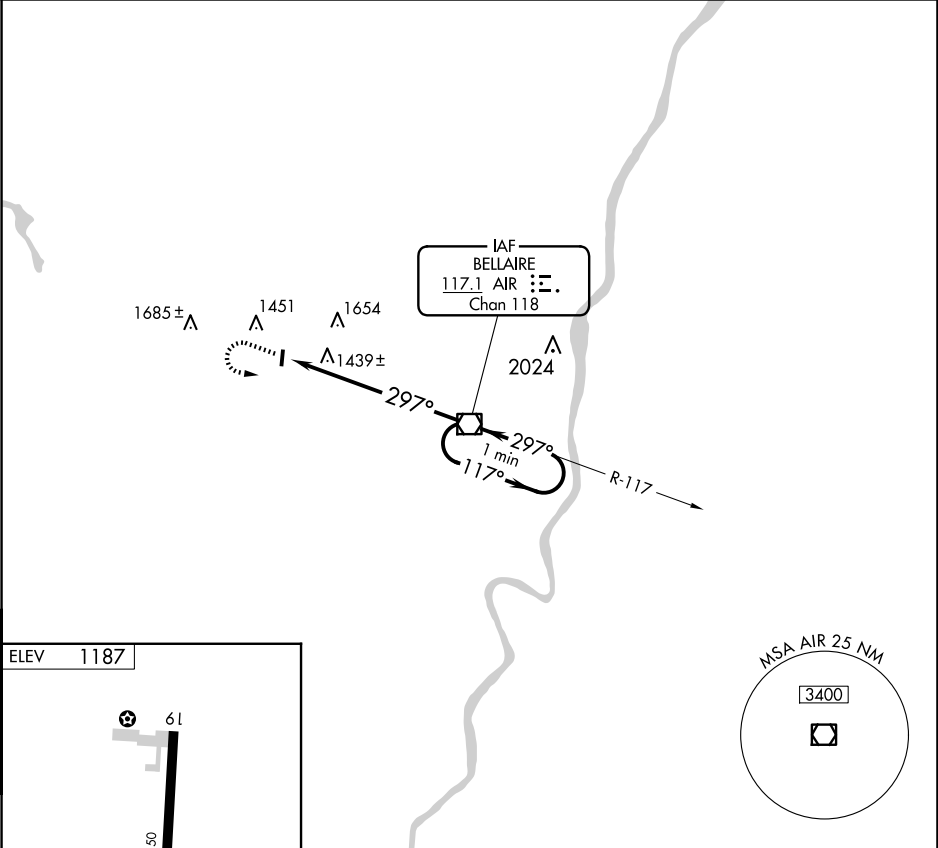
VOR/DME AIR	APP CRS	Rwy Idg	N/A
117.1	297°	TDZE	N/A
Chan 118		Apt Elev	1187

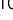





VOR-A

ALDERMAN (2P7)

<div><div><div>▼</div><div>NA</div></div><div>Use Wheeling Ohio County altimeter setting; when not received, use Pittsburgh Intl altimeter setting and increase all MDAs 80 feet and Circling Cat A visibility ¼ SM. Procedure NA at night. Helicopter visibility reduction below 1 SM NA.</div></div>	MISSED APPROACH: Climb to 3100 then left turn direct AIR VOR/DME and hold.
--	--

HIG ASOS	CLEVELAND CENTER	CTAF	123.3 0
127.375	126.95 239.30	122.9	



3100			AIR 	AIR VOR/DME	One Minute Holding Pattern
	AIR 7.1	297°		117° → ← 297°	3100
					
CATEGORY	A		B	C	D
CIRCLING	1920-1 733 (800-1)		2000-1¼ 813 (900-1¼)	NA	

EC-2, 10 JUL 2025 to 07 AUG 2025

EC-2, 10 JUL 2025 to 07 AUG 2025