

WAAS CH 70615 W27A	APP CRS 275°	Rwy Idg TDZE Apt Elev	6520 974 981
--	------------------------	-----------------------------	---

RNAV (GPS) RWY 27L

OAKLAND COUNTY INTL (PTK)

RNP APCH.

▼

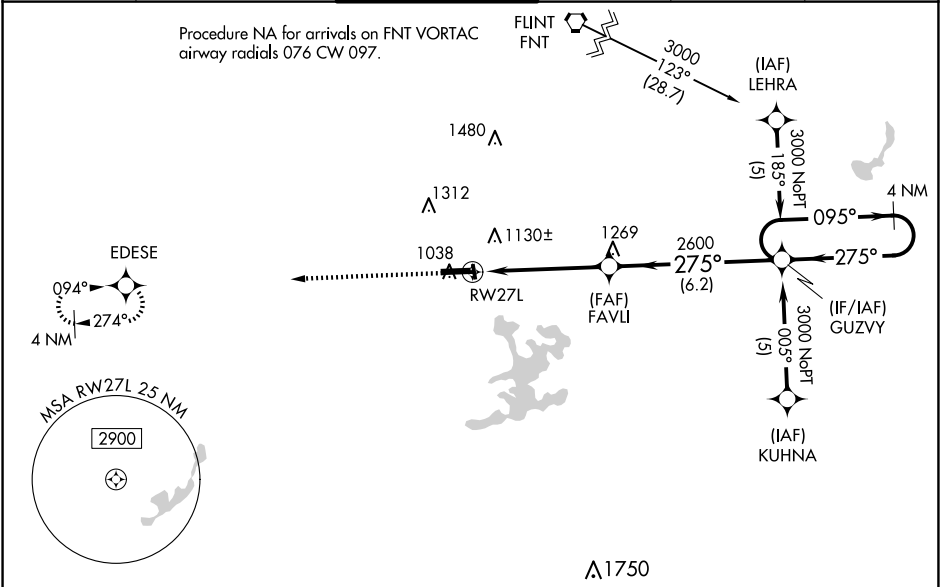
For uncompensated Baro-VNAV systems, LNAV/VNAV NA below -16°C (4°F) or above 47°C (116°F).

▲

Baro-VNAV and VDP NA when using Coleman A Young altimeter setting. Circling Rwy 9L, 36 NA at night. When local altimeter setting not received, use Coleman A Young Muni altimeter setting and increase LPV DA to 1279 feet, LNAV/VNAV DA to 1568 and all MDA 120 feet, increase LPV and LNAV/VNAV all cats visibility ½ SM, LNAV Cat C/D, and Circling Cat C/D visibility ½ SM.


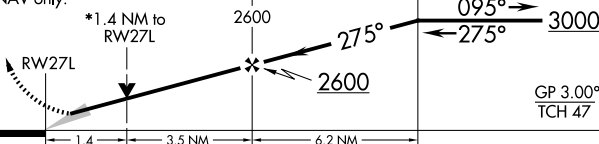

MISSED APPROACH:
Climb to 3000 direct
EDESE and hold.

ATIS 125.025	DETROIT APP CON 132.35 284.0	PONTIAC TOWER * 120.5 (CTAF) 0	GND CON 121.9	CLNC DEL 118.25	UNICOM 122.95
------------------------	--	--	-------------------------	---------------------------	-------------------------



ELEV 981 D TDZE 974

Key features include: 3000, EDESE, 275°, 5676 X 100, 6521 X 150, 2595, 36, TWR 1037, HIRL Rwy 9R-27L, MIRL Rwy 9L-27R, REIL Rwy 27L, REIL Rwy 9L and 27R.

3000 ↑	EDESE 	VGSi and RNAV glidepath not coincident (VGSi Angle 3.00/TCH 42).			4 NM Holding Pattern
*LNAV only.		FAVLI 2600	GUZVY	3000	
					
CATEGORY	A	B	C	D	
LPV DA	1174- ³ / ₄ 200 (200- ³ / ₄)				
LNAV/ VNAV DA	1463-1 ³ / ₄ 489 (500-1 ³ / ₄)				
LNAV MDA	1460-1	486 (500-1)	1460-1 ¹ / ₄ 486 (500-1 ¹ / ₄)	1460-1 ¹ / ₂ 486 (500-1 ¹ / ₂)	
 CIRCLING	1500-1 519 (600-1)	1540-1 559 (600-1)	1640-1 ³ / ₄ 659 (700-1 ³ / ₄)	1640-2 659 (700-2)	

EC-1, 10 JUL 2025 to 07 AUG 2025

EC-1, 10 JUL 2025 to 07 AUG 2025