

LOC I-CSV <b>109.1</b>	APP CRS <b>255°</b>	Rwy Idg TDZE Apt Elev	<b>5423</b> <b>1871</b> <b>1882</b>
---------------------------	------------------------	-----------------------------	---

ILS Z or LOC Z RWY 26

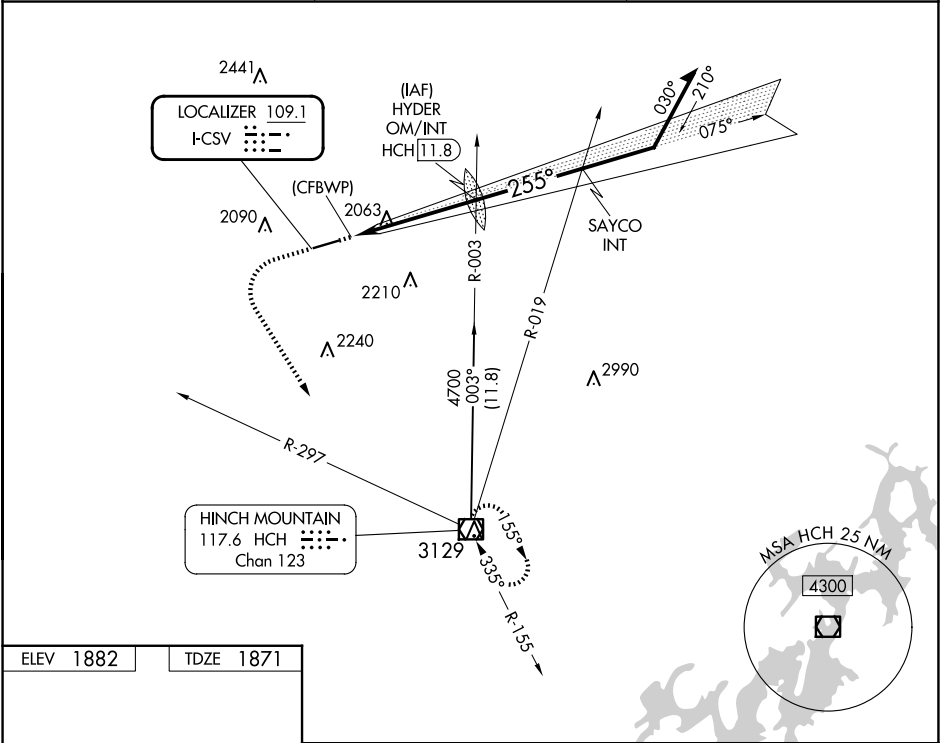
CROSSVILLE MEML-WHITSON FLD (CSV)

⚠

Autopilot coupled approach NA below 2500.

MISSED APPROACH: Climb to 3300 then climbing left turn to 5000 on heading 152° and HCH VOR/DME R-297 to HCH VOR/DME and hold.

ASOS <b>120.625</b>	ATLANTA CENTER <b>133.6 254.3</b>	UNICOM <b>122.7 (CTAF)</b> <b>0</b>
------------------------	--------------------------------------	--



ELEV 1882

TDZE 1871

REIL Rwy 26

HIRL Rwy 8-26 **0**

FAF to MAP 4.7 NM

Knots	60	90	120	150	180
Min:Sec	4:42	3:08	2:21	1:53	1:34

	3300	5000	HCH		
	↑	hdg 152°	HCH R-297		
	LOC unusable inside 0.5 NM.				
			HYDER OM/INT		Remain within 10 NM
			3557		
			3600		
			4100		
			4100		
			GS 3.00°		
			TCH 60		
			0.5	4.7 NM	4 NM
CATEGORY	A	B	C	D	
S-ILS 26	2121-¾ 250 (300-¾)				
S-LOC 26	2440-1	569 (600-1)	2440-1½	569 (600-1½)	
CIRCLING	2440-1	558 (600-1)	2440-1½	2540-2	
			558 (600-1½)	658 (700-2)	