

APP CRS	Rwy Idg	3635
301°	TDZE	1108
	Apt Elev	1110

RNAV (GPS) RWY 30
STEVENS POINT MUNI (STE)

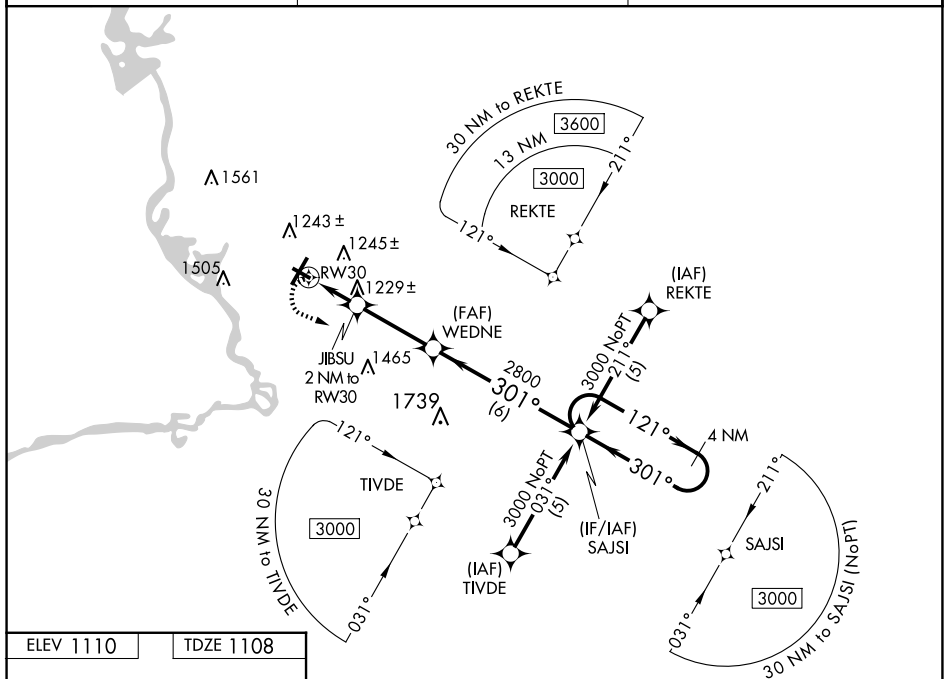
RNP APCH - GPS.

T Rwy 30 helicopter visibility reduction below $\frac{3}{4}$ SM NA. When local altimeter setting not received, use Mosinee altimeter setting and increase all MDA 60 feet, increase LNAV Cat C and D visibility $\frac{1}{4}$ SM. VDP NA when using Mosinee altimeter setting.

MISSED APPROACH:
Climbing left turn to 3000
direct SAJSI and hold.

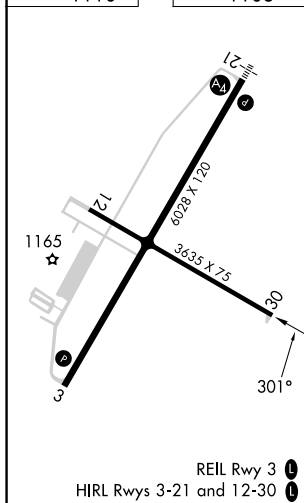
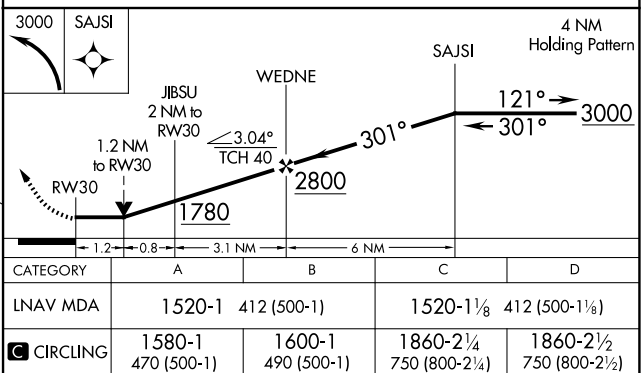
AWOS-3
119.275

MINNEAPOLIS CENTER
124.4 317.7

UNICOM
122.7 (CTAF) **L**

ELEV 1110

TDZE 1108

REIL Rwy 3 **L**HIRL Rwy 3-21 and 12-30 **L**

STEVENSON, WISCONSIN
Orig-C 27JAN22

44°33'N - 89°32'W

STEVENS POINT MUNI (STE)
RNAV (GPS) RWY 30