

WAAS CH 77910 W03A	APP CRS 031°	Rwy Idg TDZE 1108 Apt Elev 1110
--	------------------------	---

RNAV (GPS) RWY 3

STEVENS POINT MUNI (STE)

RNP APCH - GPS.

▼

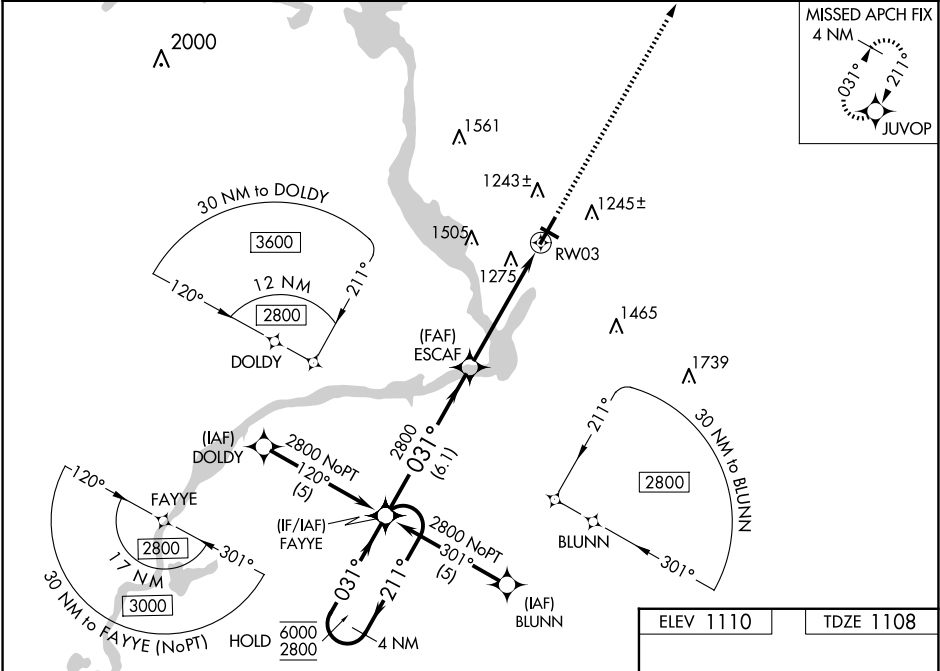
Rwy 3 helicopter visibility reduction below ¾ SM NA.

⚠

For uncompensated Baro-VNAV systems, LNAV/VNAV NA below -17° C or above 54°C.

MISSED APPROACH:
Climb to 2900 direct
JUVOP and hold.

AWOS-3 119.275	MINNEAPOLIS CENTER 124.4 317.7	UNICOM 122.7 (CTAF) 0
--------------------------	--	---------------------------------



4 NM Holding Pattern

VGSI and RNAV glidepath not coincident (VGSI Angle 3.00/TCH 44).

2900

JUVOP

FAYYE

ESCAF

1.3 NM to RW03

RW03

6000

2800

GP 3.00°

TCH 38

211°

031°

031°

2800

2800

6.1 NM

3.8 NM

1.3 NM

CATEGORY	A	B	C	D
LPV DA	1409-7⁄8 301 (300-7⁄8)			
LNAV/VNAV DA	1594-13⁄8 486 (500-13⁄8)			
LNAV MDA	1540-1	432 (500-1)	1540-1¼	432 (500-1¼)
CIRCLING	1580-1 470 (500-1)	1600-1 490 (500-1)	1860-2¼ 750 (800-2¼)	1860-2½ 750 (800-2½)

