

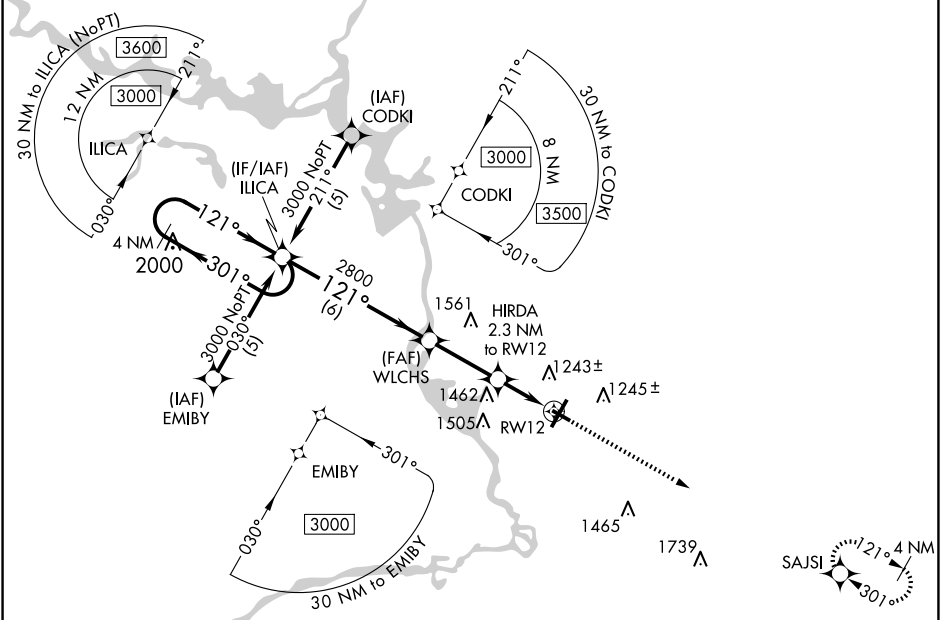
APP CRS	Rwy Idg	3635
121°	TDZE	1108
	Apt Elev	1110

RNAV (GPS) RWY 12

STEVENS POINT MUNI (STE)

RNP APCH - GPS.	MISSED APPROACH: Climb to 3000 direct SAJSI and hold.
<div><div></div><div>Rwy 12 helicopter visibility reduction below ¾ SM NA. When local altimeter not received, use Mosinee altimeter setting and increase all MDA 60 feet, increase LNAV Cat C and D visibility ½ SM. VDP NA when using Mosinee altimeter setting.</div></div>	

AWOS-3 119.275	MINNEAPOLIS CENTER 124.4 317.7	UNICOM 122.7 (CTAF) 0
-------------------	-----------------------------------	--------------------------



<div> <div>4 NM Holding Pattern</div> <div>ILUCA</div> <div>WLCHS</div> <div>HIRDA 2.3 NM to RW12</div> <div>3000</div> <div>SAJSI</div> </div>				
CATEGORY	A	B	C	D
LNAV MDA	1760-1	652 (700-1)	1760-1 $\frac{7}{8}$	652 (700-1 $\frac{7}{8}$)
CIRCLING	1760-1	650 (700-1)	1860-2 $\frac{1}{4}$ 750 (800-2 $\frac{1}{4}$)	1860-2 $\frac{1}{2}$ 750 (800-2 $\frac{1}{2}$)

ELEV 1110

TDZE 1108

REIL Rwy 3

HIRL Rws 3-21 and 12-30