

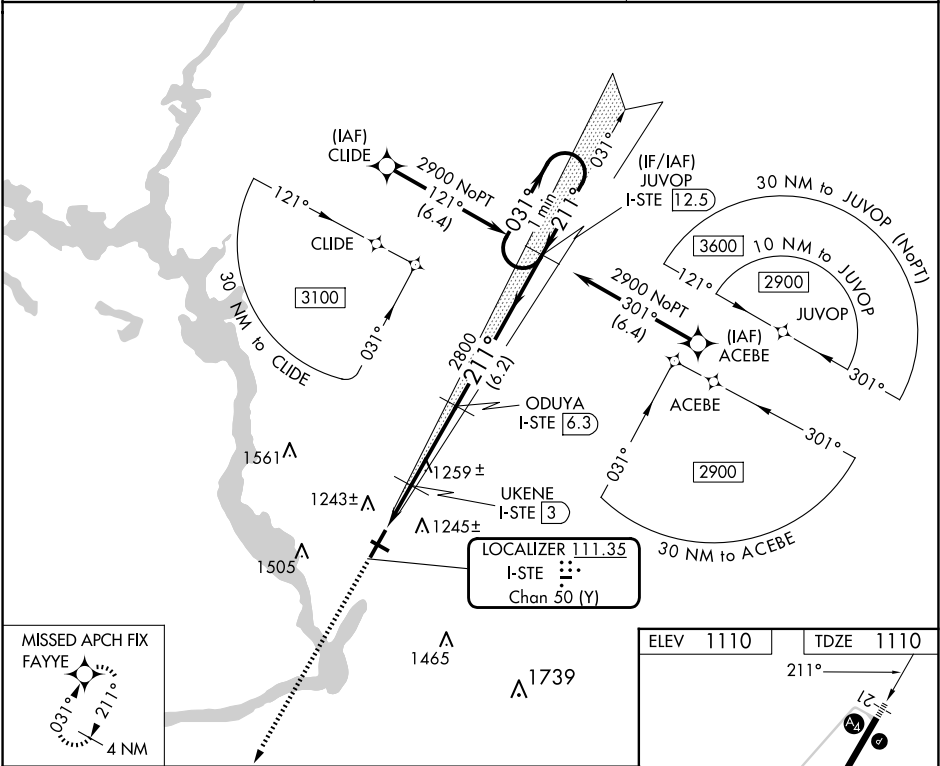
LOC/DME	I-STE	Rwy Idg	6028
111.35	APP CRS	TDZE	1110
Chan 50(Y)	211°	Apt Elev	1110

ILS or LOC RWY 21

STEVENS POINT MUNI (STE)

RNP APCH - GPS.	MALS	MISSED APPROACH: Climb to 2800 direct FAYYE and hold.
DME required.		
For inop ALS, increase S-LOC 21 Cat C/D visibility to 1½ SM. Inop table does NA not apply to S-ILS 21 all Cats. Autopilot coupled approach NA below 1400.		

AWOS-3 119.275	MINNEAPOLIS CENTER 124.4 317.7	UNICOM 122.7 (CTAF)
-------------------	-----------------------------------	------------------------



2800	FAYYE	ODUYA I-STE [6.3]	JUVOP I-STE [12.5]	One Minute Holding Pattern
		UKENE I-STE [3]	2800	031° → 2900
I-STE [1.1]	I-STE [2.3]		211° ← 211°	Use I-STE DME when on localizer course.
1.2 NM	0.7 NM	3.3 NM	6.2 NM	GS 3.00° TCH 44
CATEGORY	A	B	C	D
S-ILS 21	1360-¾ 250 (300-¾)			
S-LOC 21	1520-¾ 410 (500-¾)		1520-1 410 (500-1)	
CIRCLING	1580-1 470 (500-1)	1600-1 490 (500-1)	1860-2¼ 750 (800-2¼)	1860-2½ 750 (800-2½)

ELEV 1110	TDZE 1110
211°	
REIL Rwy 3	
HIRL Rwys 3-21 and 12-30	
FAF to MAP 5.2 NM	
Knots	60 90 120 150 180
Min:Sec	5:12 3:28 2:36 2:05 1:44