

VOR/DME GON	APP CRS	Rwy Idg	5000
110.85	242°	TDZE	8
Chan 45 (Y)		Apt Elev	9

VOR RWY 23

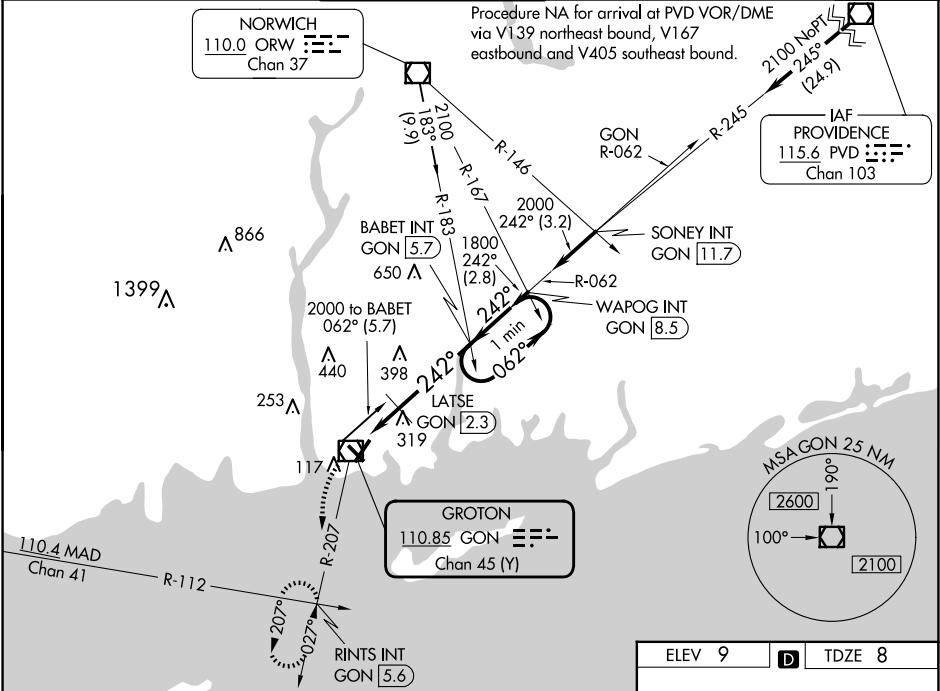
GROTON-NEW LONDON (GON)

Circling Rwy 15 NA at night.

Rwy 23 helicopter visibility reduction below 1 SM NA.

MISSED APPROACH: Climbing left turn to 2000 via GON R-207 to RINTS INT/GON 5.6 DME and hold.

ATIS	PROVIDENCE APP CON *	GROTON TOWER *	GND CON	CLNC DEL	CLNC DEL
127.0	125.75 319.2	125.6 (CTAF) 0 236.775	121.65 236.775	119.85 (when twr closed)	121.65



2000 GON R-207	RINTS INT	VGSI and descent angles not coincident (VGSI Angle 3.00/TCH 49).	One Minute Holding Pattern
GON VOR/DME	GON 0.7	LATSE GON 2.3	BABET INT GON 5.7
242° 1800 062° 2000			
3.48° TCH 50			
1.6 NM 3.4 NM			
CATEGORY	A	B	C D
S-23	640-1	632 (700-1)	640-1 3/4 632 (700-1 3/4)
CIRCLING	640-1	631 (700-1)	700-2 840-2 3/4 691 (700-2) 831 (900-2 3/4)
LATSE FIX MINIMUMS			
S-23	580-1	572 (600-1)	580-1 5/8 572 (600-1 5/8)
CIRCLING	580-1	620-1	700-2 840-2 3/4 571 (600-1) 611 (700-1) 691 (700-2) 831 (900-2 3/4)

