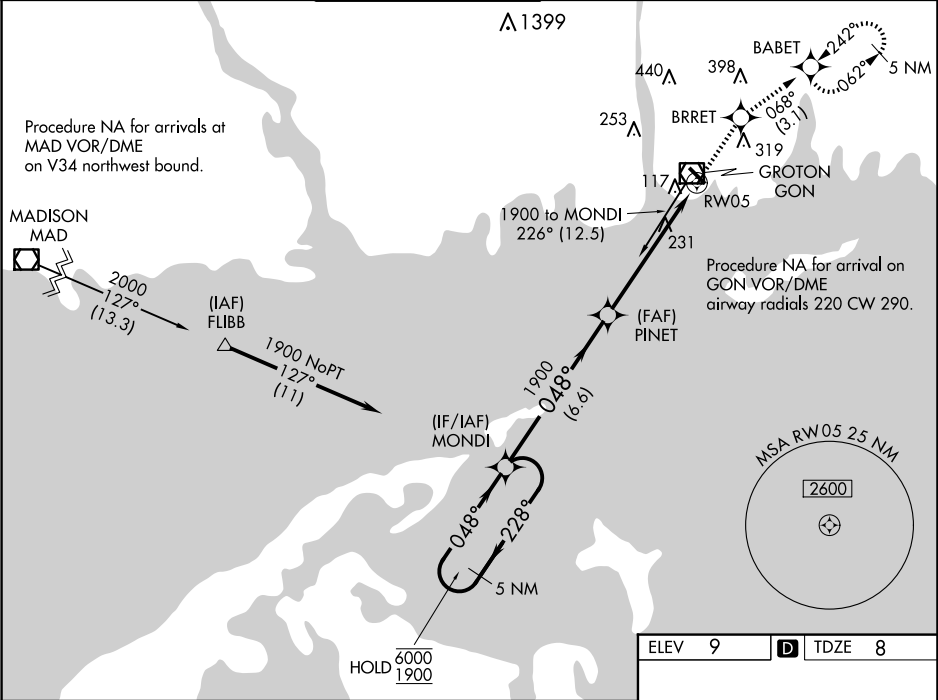


WAAS CH 45521 W05A	APP CRS 048°	Rwy Idg TDZE Apl Elev	5000 8 9
--	------------------------	-----------------------------	-------------------------------------

RNAV (GPS) RWY 5

GROTON-NEW LONDON (GON)

RNP APCH - GPS.			MALSR		MISSED APPROACH: Climb to 2100 direct BRRET and on track 068° to BABET and hold, continue climb-in-hold to 2100.	
<div><div></div><div></div></div> <div>Circling Rwy 15 NA at night. For uncompensated Baro-VNAV systems, procedure NA below -15°C or above 54°C. For inop ALS, increase LPV all Cats visibility to RVR 4500 and LNAV Cats visibility C/D to 1½.</div>			<div><div></div><div></div></div>			
ATIS 127.0	PROVIDENCE APP CON ★ 125.75 319.2	GROTON TOWER ★ 125.6 (CTAF) 0 236.775	GND CON 121.65 236.775		CLNC DEL 119.85 (when twr closed)	CLNC DEL 121.65



5 NM Holding Pattern		2100 ↑		BRRET ✦		tr 068° ✦		BABET ✦	
<div>6000 1900</div> <div>← 228° 048° →</div>		MONDI 		PINET 1900 ✕		1.4 NM to RW05		RW05 ↘	
GP 3.00° TCH 42		6.6 NM		4.3 NM		1.4 NM			
CATEGORY	A	B	C	D					
LPV DA	292/24 284 (300-½)								
LNAV/ VNAV DA	533/55 525 (600-1)								
LNAV MDA	500/24	492 (500-½)	500/50	492 (500-1)					
CIRCLING	580-1 571 (600-1)	620-1 611 (700-1)	700-2 691 (700-2)	840-2¾ 831 (900-2¾)					

