

VORTAC ROD	APP CRS	Rwy Idg	N/A
117.5	245°	TDZE	N/A
Chan 122		Apt Elev	1044

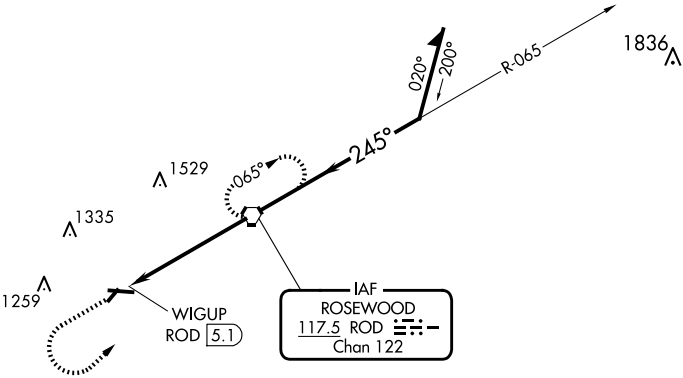
VOR-A

SIDNEY MUNI (SCA)

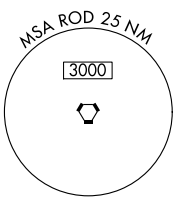
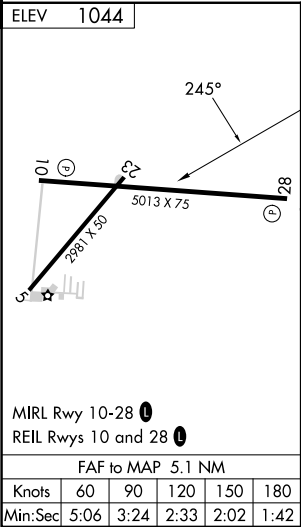
When local altimeter setting not received, use James M Cox Dayton Intl altimeter setting and increase all MDAs 60 feet and increase Cat C visibility ¼ mile. Night Landing: Rwy 28 operational VGSI required, remain on or above VGSI glidepath until threshold. Helicopter visibility reduction below 1 SM NA.




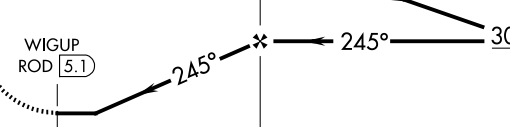

MISSED APPROACH: Climb to 3000 then left turn direct ROD VORTAC and hold.

AWOS-3 120.425	COLUMBUS APP CON 134.45 294.5	UNICOM 123.05 (CTAF)
-------------------	----------------------------------	-------------------------



NoPT for arrivals on ROD Vortac airway radials 314 CW 088.



3000			ROD 	ROD VORTAC	Remain within 10 NM
					
CATEGORY	A	B	C	D	
 CIRCLING	1540-1	496 (500-1)	1640-1½ 596 (600-1½)	1640-2 596 (600-2)	