

WAAS CH 82234 W28A	APP CRS 279°	Rwy Idg TDZE Apt Elev	5013 1044 1044
--	------------------------	-----------------------------	---

RNAV (GPS) RWY 28

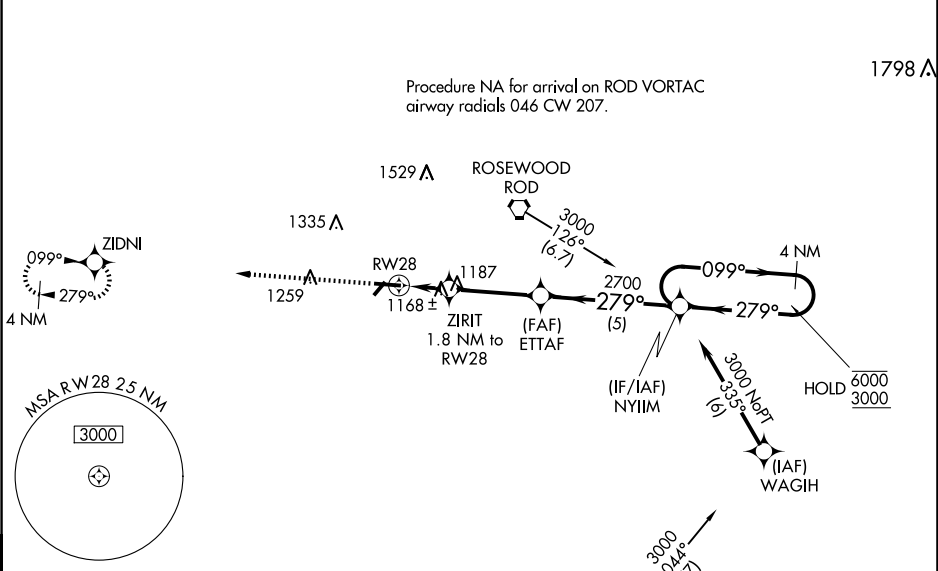
SIDNEY MUNI (SCA)

RNP APCH.

▼ Rwy 28 helicopter visibility reduction below 1 SM NA. Baro-VNAV NA when using James M. Cox Dayton Intl altimeter setting. For uncompensated Baro-VNAV systems, LNAV/VNAV NA below -22°C or above 54°C. When local altimeter setting not received, use James M. Cox Dayton Intl altimeter setting: increase LPV DA to 1355; increase LNAV/VNAV DA to 1365; increase all MDA 60 feet and LNAV Cat C visibility and Circling Cat C visibility ¼ SM. Straight-in Rwy 28 at night, operational VGSI required, remain at or above VGSI glidepath until threshold.

MISSED APPROACH:
Climb to 3000
direct ZIDNI and
hold.

AWOS-3 120.425	COLUMBUS APP CON 134.45 294.5	UNICOM 123.05 (CTAF) 1
--------------------------	---	---



ELEV	1044	TDZE	1044
------	-------------	------	-------------

3000 **↑** ZIDNI

* LNAV only.

RW28

ZIRIT 1.8 NM to RW28

ETTAF

2700

279°

099°

6000

3000

GP 3.00°

TCH 36

10 28 279° 5013 X 75 2981 X 50

MIRL Rwy 10-28 **1**

REIL Rwy 10 and 28 **1**

CATEGORY	A	B	C	D
LPV DA	1302-1	258 (300-1)		NA
LNAV/VNAV DA	1312-1	268 (300-1)		NA
LNAV MDA	1420-1	376 (400-1)		NA
C CIRCLING	1460-1 416 (500-1)	1520-1 476 (500-1)	1640-1½ 596 (600-1½)	NA