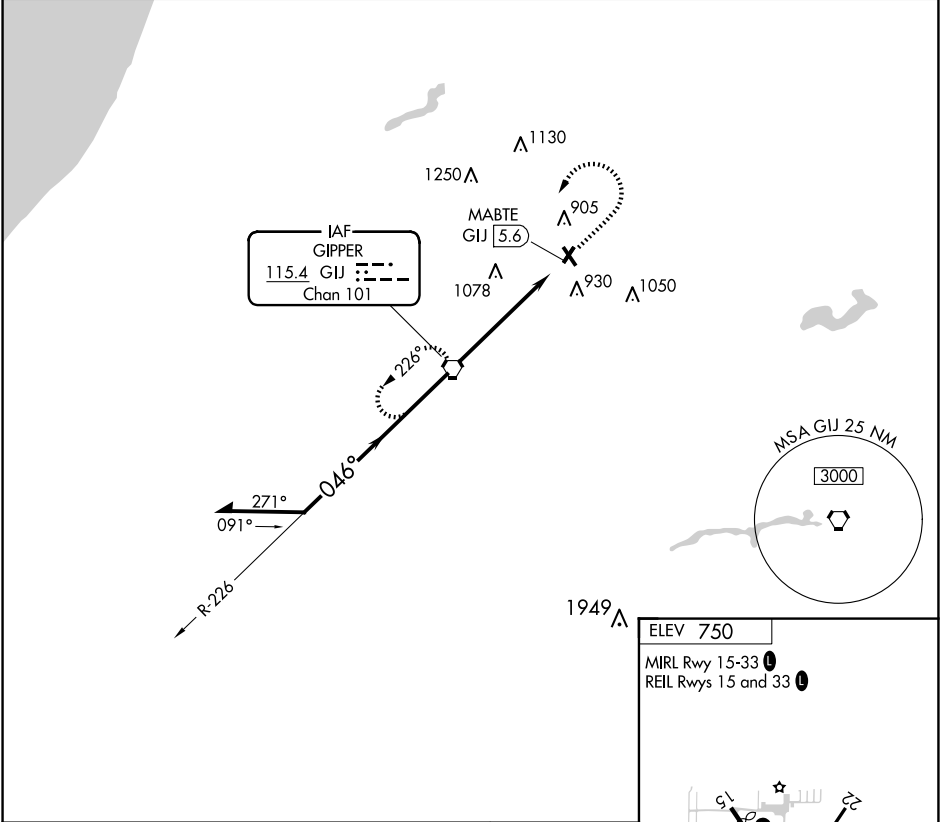


VORTAC GIJ <b>115.4</b> Chan <b>101</b>	APP CRS <b>046°</b>	Rwy Ldg TDZE Apt Elev <b>750</b>	N/A N/A <b>750</b>
---	------------------------	---	--------------------------

VOR-A  
JERRY TYLER MEML (3TR)

DME required.		MISSED APPROACH: Climb to 2500 then left turn direct GIJ VORTAC and hold.	
▼ ▲ NA Procedure NA at night. Use SBN altimeter setting; when not received, use EKM altimeter setting and increase all MDAs 20 feet. Rwy 4, 15, 22, and 33 helicopter visibility reduction below 1 SM NA.			
SBN ASOS <b>120.675</b>	SOUTH BEND APP CON ★ <b>118.55 257.8</b>	GCO <b>121.725</b>	UNICOM <b>122.8</b> (CTAF) ①



Remain within 10 NM				GIJ VORTAC <b>2500</b>	2500	GIJ
2500				046°	2500	MABTE GIJ 5.6
				5.6 NM		
CATEGORY	A	B	C	D	FAF to MAP 5.6 NM	
CIRCLING	1300-1	550 (600-1)	1460-2 710 (800-2)	NA	Knots	60 90 120 150 180
					Min:Sec	5:36 3:44 2:48 2:14 1:52

EC-1, 10 JUL 2025 to 07 AUG 2025

EC-1, 10 JUL 2025 to 07 AUG 2025