

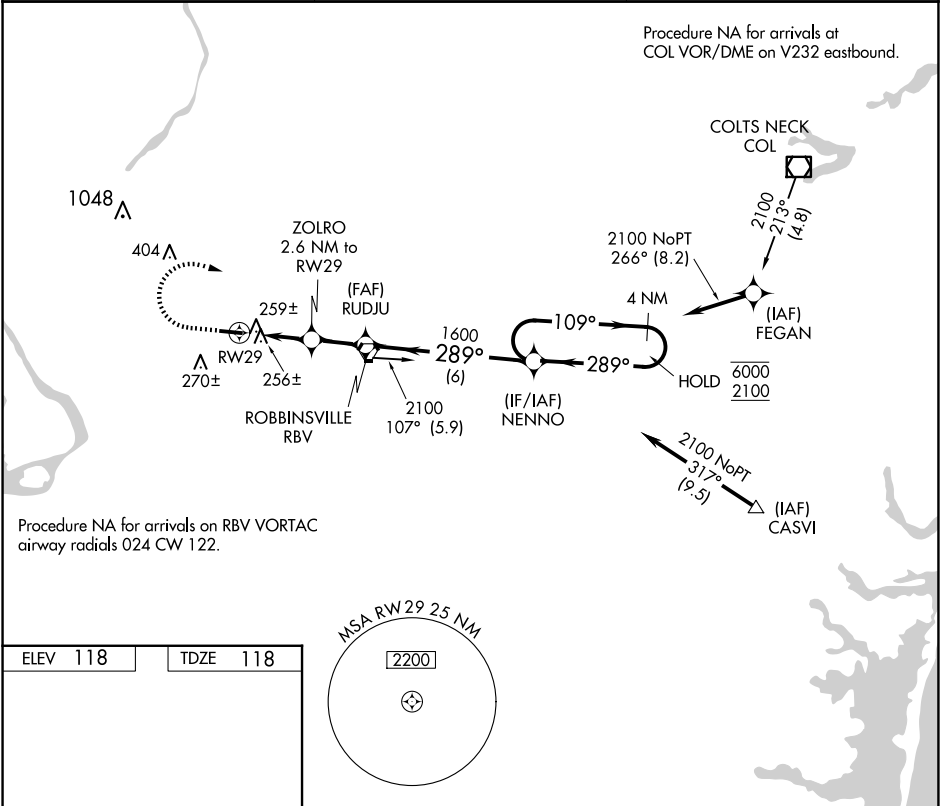
APP CRS	Rwy Idg	3975
289°	TDZE	118
	Apt Elev	118

RNAV (GPS) RWY 29

TRENTON-ROBBINSVILLE (N87)

RNP APCH.	MISSED APPROACH: Climb to 1000, then climbing right turn to 2100 direct NENNO and hold.
<div><div>Procedure NA at night. Rwy 29 helicopter visibility reduction below 1 SM NA. Use Wrightstown altimeter setting.</div></div>	

MC GUIRE APP CON 126.475 363.8	UNICOM 123.0 (CTAF)	123.3
-----------------------------------	------------------------	-------



<div><div><div>1000</div><div>2100</div><div>NENNO</div></div><div><div>Visual Segment - Obstacles.</div><div><div><div>4275 X 75</div><div>289°</div></div><div><div>2.6 NM</div><div>1.9 NM</div><div>6 NM</div></div></div></div></div>	Visual Segment - Obstacles.			
	4 NM Holding Pattern			
	<div><div><div><div>1000</div><div>2100</div><div>NENNO</div></div><div><div>4275 X 75</div><div>289°</div></div><div><div>2.6 NM</div><div>1.9 NM</div><div>6 NM</div></div></div></div>			
	<div><div><div><div>1000</div><div>2100</div><div>NENNO</div></div><div><div>4275 X 75</div><div>289°</div></div><div><div>2.6 NM</div><div>1.9 NM</div><div>6 NM</div></div></div></div>			
CATEGORY	A	B	C	D
LNAV MDA	540-1	422 (500-1)	540-1¼	422 (500-1¼)
CIRCLING	680-1	562 (600-1)	680-1½ 562 (600-1½)	760-2 642 (700-2)