

APP CRS  
**108°**

Rwy Idg  
TDZE  
Apt Elev

**3877**  
**118**  
**118**

RNAV (GPS) RWY 11  
TRENTON-ROBBINSVILLE (N87)

RNP APCH.

▼ NA

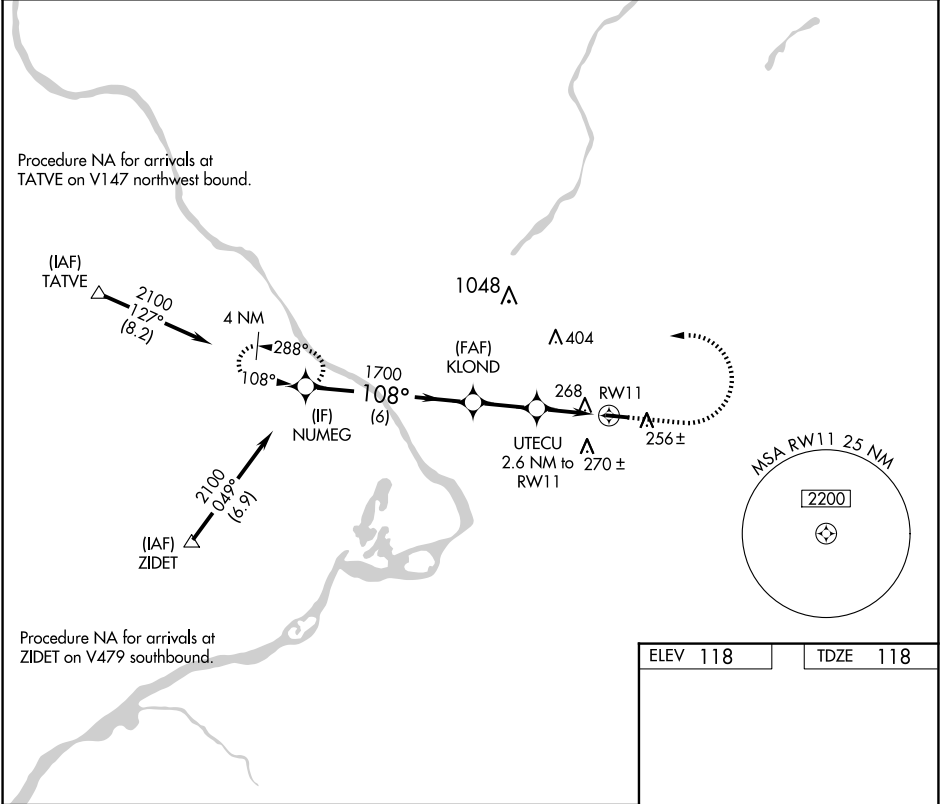
Procedure NA at night. Rwy 11 helicopter visibility reduction below 1 SM NA. Use Wrightstown altimeter setting.

MISSED APPROACH: Climb to 1100, then climbing left turn to 2100 direct NUMEG and hold.

MC GUIRE APP CON  
**126.475 363.8**

UNICOM  
**123.0** (CTAF)

**123.3**



ELEV 118      TDZE 118

MIRL Rwy 11-29

Visual Segment - Obstacles.				
CATEGORY	A	B	C	D
LNAV MDA	640-1	522 (600-1)	640-1 <sup>5</sup> / <sub>8</sub>	522 (600-1 <sup>5</sup> / <sub>8</sub> )
CIRCLING	680-1	562 (600-1)	680-1 <sup>5</sup> / <sub>8</sub> 562 (600-1 <sup>5</sup> / <sub>8</sub> )	760-2 642 (700-2)