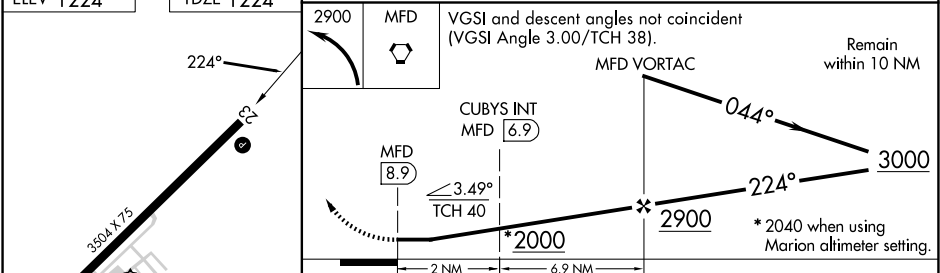
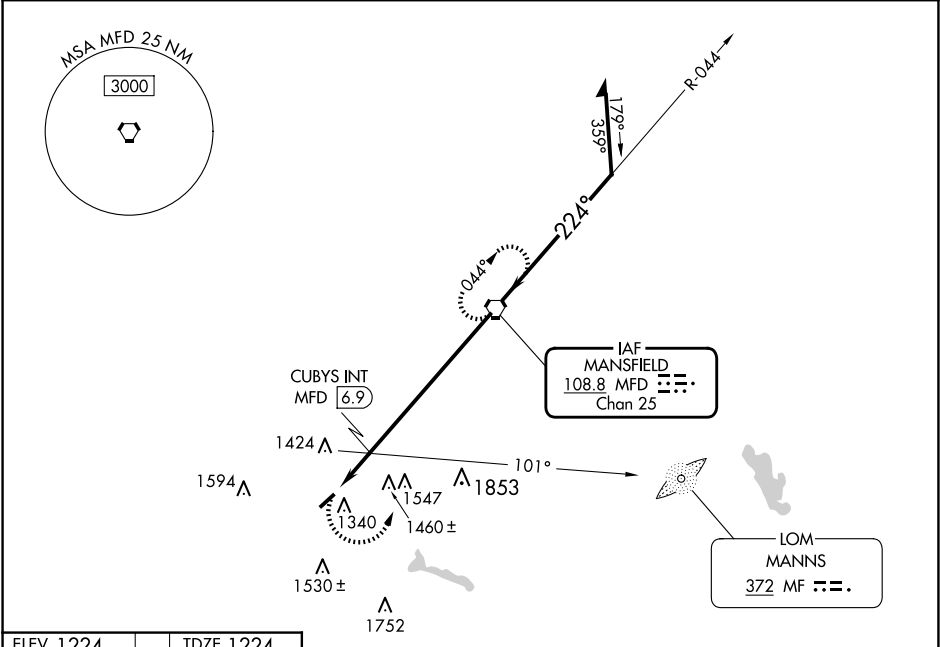





VORTAC MFD	APP CRS	Rwy Idg	3504
108.8	224°	TDZE	1224
Chan 25		Apt Elev	1224

VOR RWY 23
GALLION MUNI (GQQ)

RADAR required for procedure entry.		MISSED APPROACH: Climbing left turn to 2900 direct MFD VORTAC and hold.
Procedure NA at night. Use Mansfield altimeter setting; when not received, use Marion altimeter setting and increase all MDAs 40 feet, increase CUBYS fix minimums S-23 all Cats visibility ½ SM and Circling Cat C ¼ SM. Rwy 23 helicopter visibility reduction below 1 SM NA.		

CLEVELAND APP CON ★	CLNC DEL	UNICOM
128.35 360.65	126.8	122.8 (CTAF) 0



<div></div> <div>REIL Rwys 5 and 23 </div> <div>MIRL Rwy 5-23 </div> <div>FAF to MAP 8.9 NM</div> <div><table><tr><td>Knots</td><td>60</td><td>90</td><td>120</td><td>150</td><td>180</td></tr><tr><td>Min:Sec</td><td>8:54</td><td>5:56</td><td>4:27</td><td>3:34</td><td>2:58</td></tr></table></div>	Knots	60	90	120	150	180	Min:Sec	8:54	5:56	4:27	3:34	2:58	<table><tr><th>CATEGORY</th><th>A</th><th>B</th><th>C</th><th>D</th></tr><tr><td>S-23</td><td>2000-1 776 (800-1)</td><td>2000-1¼ 776 (800-1¼)</td><td>2000-2½ 776 (800-2½)</td><td>NA</td></tr><tr><td>CIRCLING</td><td>2000-1 776 (800-1)</td><td>2000-1¼ 776 (800-1¼)</td><td>2000-2½ 776 (800-2½)</td><td>NA</td></tr><tr><td colspan="5">CUBYS FIX MINIMUMS</td></tr><tr><td>S-23</td><td colspan="2">1760-1 536 (600-1)</td><td>1760-1½ 536 (600-1½)</td><td>NA</td></tr><tr><td>CIRCLING</td><td>1800-1 576 (600-1)</td><td>1960-1 736 (800-1)</td><td>1960-2 736 (800-2)</td><td>NA</td></tr></table>	CATEGORY	A	B	C	D	S-23	2000-1 776 (800-1)	2000-1¼ 776 (800-1¼)	2000-2½ 776 (800-2½)	NA	CIRCLING	2000-1 776 (800-1)	2000-1¼ 776 (800-1¼)	2000-2½ 776 (800-2½)	NA	CUBYS FIX MINIMUMS					S-23	1760-1 536 (600-1)		1760-1½ 536 (600-1½)	NA	CIRCLING	1800-1 576 (600-1)	1960-1 736 (800-1)	1960-2 736 (800-2)	NA
	Knots	60	90	120	150	180																																					
	Min:Sec	8:54	5:56	4:27	3:34	2:58																																					
	CATEGORY	A	B	C	D																																						
	S-23	2000-1 776 (800-1)	2000-1¼ 776 (800-1¼)	2000-2½ 776 (800-2½)	NA																																						
	CIRCLING	2000-1 776 (800-1)	2000-1¼ 776 (800-1¼)	2000-2½ 776 (800-2½)	NA																																						
CUBYS FIX MINIMUMS																																											
S-23	1760-1 536 (600-1)		1760-1½ 536 (600-1½)	NA																																							
CIRCLING	1800-1 576 (600-1)	1960-1 736 (800-1)	1960-2 736 (800-2)	NA																																							