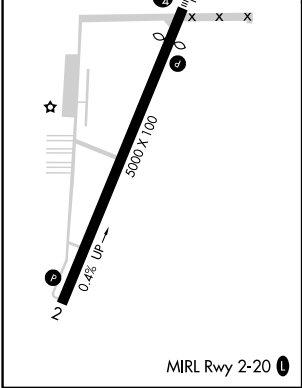
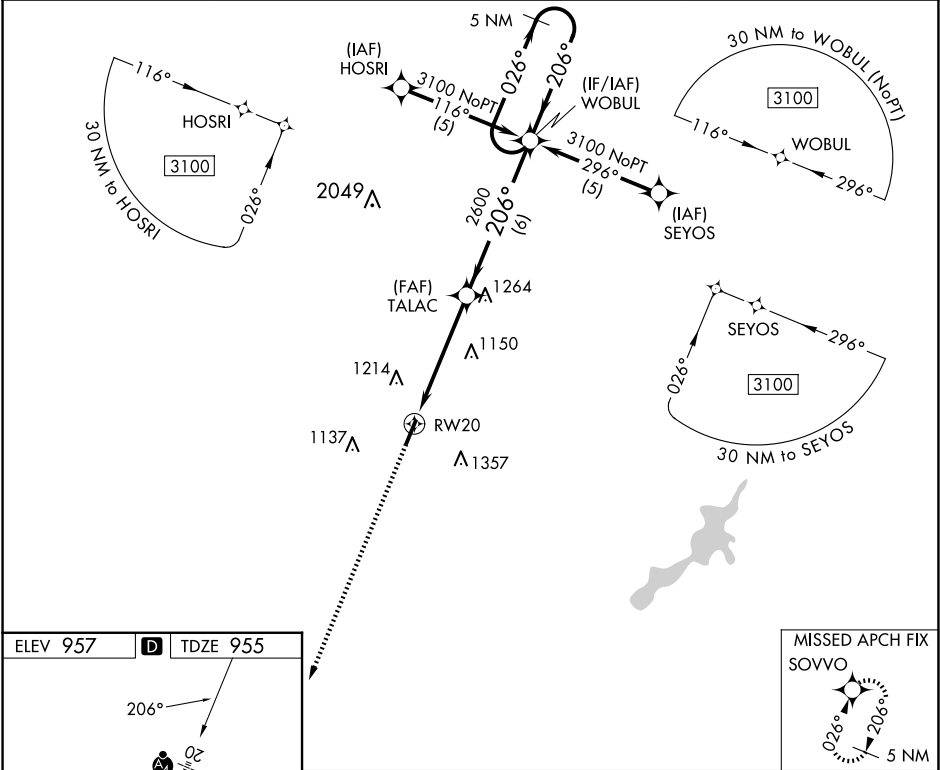


WAAS CH <b>93601</b> <b>W20A</b>	APP CRS <b>206°</b>	Rwy Idg TDZE Apt Elev	<b>4410</b> <b>955</b> <b>957</b>
--	------------------------	-----------------------------	---

**RNAV (GPS) RWY 20**  
DAYTON/WRIGHT BROTHERS (MGY)

RNP APCH.	<p>⚠ Inoperative table does not apply. When local altimeter setting not received, use James M Cox Dayton Intl altimeter setting and increase all DAs/MDAs 60 feet and Circling Cat C/D visibility ¼ SM. Rwy 20 helicopter visibility reduction below ¾ SM NA. VDP NA when using James M Cox Dayton Intl altimeter setting.</p>	MALS 	MISSED APPROACH: Climb to 3100 direct SOVVO and hold.
-----------	--	----------	--

ASOS <b>118.375</b>	COLUMBUS APP CON <b>118.85 269.275</b>	CLNC DEL <b>119.4</b>	UNICOM <b>122.8 (CTAF) 0</b>
------------------------	---	--------------------------	---------------------------------



3100

↑

SOVVO

✱

5 NM

Holding Pattern

TALAC

WOBUL

3100

026°

← 206°

2600

206°

GP 3.00°

TCH 40°

\* LNAV only.

\* 1.4 NM to RW20

RW20

1.4

3.6 NM

6 NM

CATEGORY	A	B	C	D
LPV DA	1294-1¼ 339 (400-1¼)			
LNAV MDA	1440-1	485 (500-1)	1440-1¼ 485 (500-1¼)	1440-1½ 485 (500-1½)
CIRCLING	1480-1¼ 523 (600-1¼)	1520-1¼ 563 (600-1¼)	1660-2 703 (800-2)	1660-2¼ 703 (800-2¼)

EC-2, 10 JUL 2025 to 07 AUG 2025

EC-2, 10 JUL 2025 to 07 AUG 2025