

WAAS
CH **90202**
W13A

APP CRS
133°

Rwy Idg
TDZE **1280**
Apt Elev **1317**

RNAV (GPS) RWY 13

ROCHESTER INTL (RST)

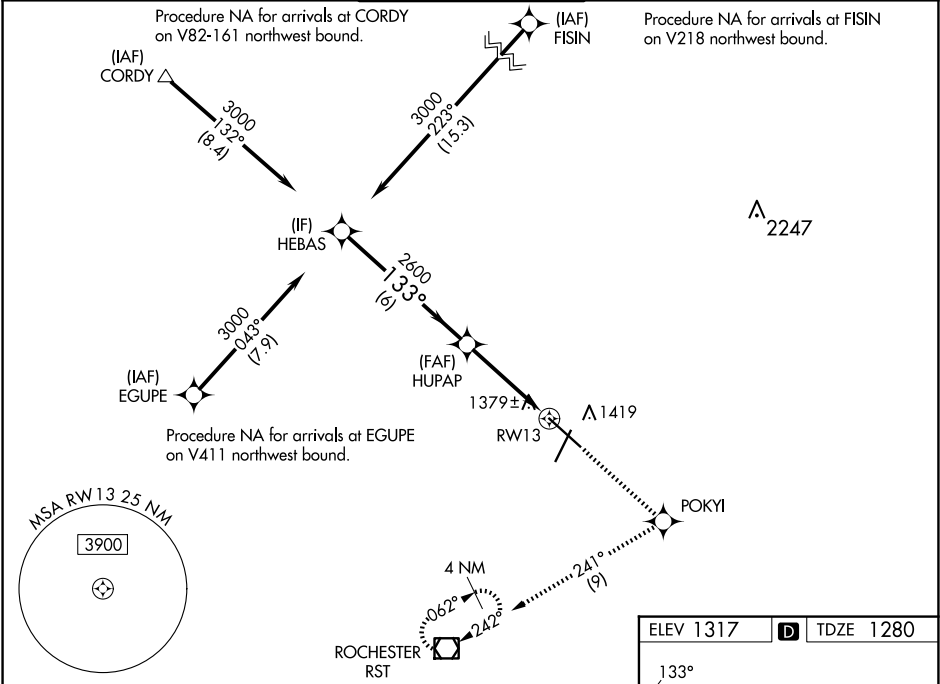
RNP APCH - GPS.

For uncompensated Baro-VNAV systems, LNAV/VNAV ASR NA below -17°C or above 54°C. For inop ALS, increase LNAV Cat C/D visibility to RVR 5500.

MALSR

MISSED APPROACH: Climb to 2900 direct POKYI and on track 241° to RST VOR/DME and hold.

ATIS 120.5	ROCHESTER APP CON★ 119.8 251.125	ROCHESTER TOWER★ 118.3 (CTAF) 257.8	GND CON 121.9	UNICOM 122.95
----------------------	--	---	-------------------------	-------------------------



VGSI and RNAV glidepath not coincident (VGSI Angle 3.00/TCH 53).

HEBAS

3000

133°

HUPAP

2600

1 NM to RW13

RW13

2900

POKYI

tr 241°

RST

GP 3.00° TCH 53

6 NM

3 NM

1 NM

CATEGORY	A	B	C	D
LPV DA	1530/18 250 (300-½)			
LNAV/VNAV DA	1679/50 399 (400-1)			
LNAV MDA	1640/24 360 (400-½)	1640/30 360 (400-¾)	1640/50 360 (400-1)	
CIRCLING	1720-1 403 (500-1)	1780-1 463 (500-1)	1900-1½ 583 (600-1½)	1900-2 583 (600-2)

ELEV 1317 D TDZE 1280

133°

0.4% UP

0.4% UP

0.4% DOWN

7301 X 150

7301 X 150

2034 X 150

1361

TWR

MIRL Rwy 3-21

REIL Rws 3 and 21

TDZ/CL Rws 13 and 31

HIRL Rwy 13-31