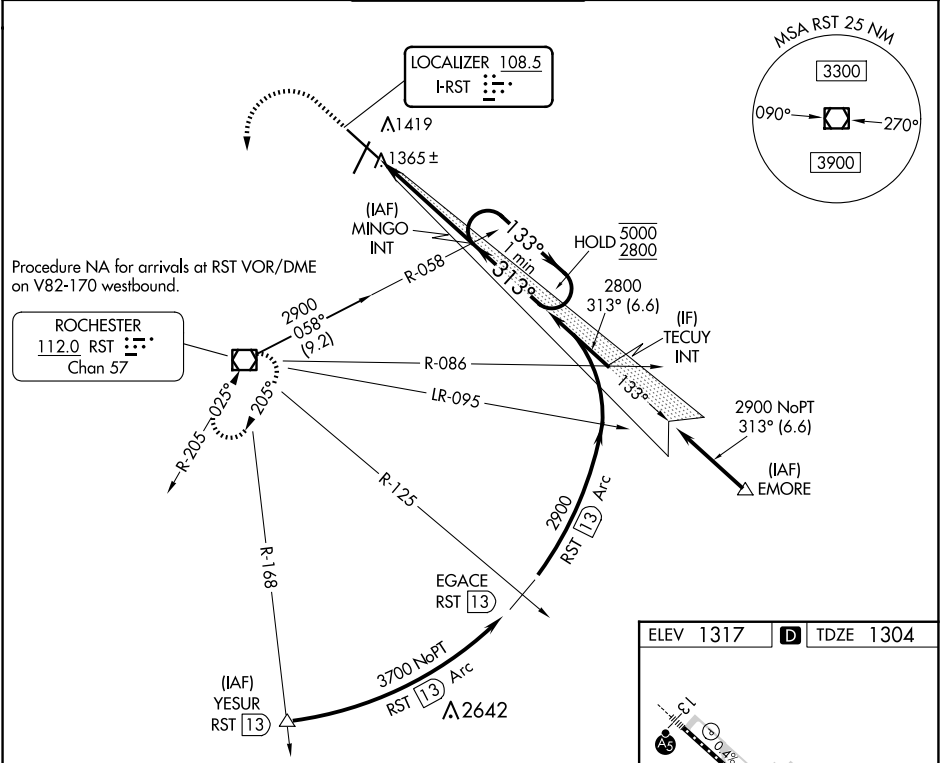






LOC I-RST <b>108.5</b>	APP CRS <b>313°</b>	Rwy Idg <b>9033</b> TDZE <b>1304</b> Apt Elev <b>1317</b>	ILS Z RWY 31 (SA CAT I) ROCHESTER INTL (RST)	
---------------------------	------------------------	---	---	--

DME required for procedure entry at YESUR.		ALS-F-2	MISSED APPROACH: Climb to 2000 then climbing left turn to 3000 direct RST VOR/DME and hold.
ASR	Requires specific OPSPEC, MSPEC, or LOA approval and use of HUD to DH. Procedure NA when tower closed.		

ATIS <b>120.5</b>	ROCHESTER APP CON★ <b>119.8 251.125</b>	ROCHESTER TOWER★ <b>118.3 (CTAF) 257.8</b>	GND CON <b>121.9</b>	UNICOM <b>122.95</b>
----------------------	--	---	-------------------------	-------------------------



2000 		3000 		RST 		MINGO INT		One Minute Holding Pattern	
						2800		133° → 5000 ← 313° 2800	
				313°				GS 3.00° TCH 55	
1129'		4.5 NM							
CATEGORY		A		B		C		D	
S-ILS 31		RA 204/14 150 DA 1454							
SA CATEGORY I ILS - SPECIAL AIRCREW & AIRCRAFT CERTIFICATION REQUIRED									

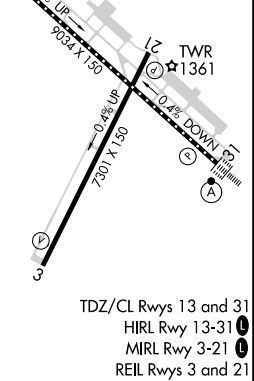


Diagram illustrating the runway layout and associated navigation aids:

- Runway 13: 3034' x 130'
- Runway 31: 7301' x 150'
- Runway 32-1: 0.43' DOWN
- TWR 1361
- Navigation aids: V, D, A, B, C, E, F, G, H, I, J, K, L, M, N, O, P, Q, R, S, T, U, V, W, X, Y, Z

TDZ/CL Rwy 13 and 31  
 HIRL Rwy 13-31  
 MIRL Rwy 3-21  
 REIL Rwy 3 and 21

