

LOC I-RST <u>108.5</u>	APP CRS 313°	Rwy Idg TDZE Apt Elev	9033 1304 1317
----------------------------------	------------------------	-----------------------------	---

ILS Z RWY 31 (CAT II)
ROCHESTER INTL (RST)

DME required for procedure entry at YESUR.

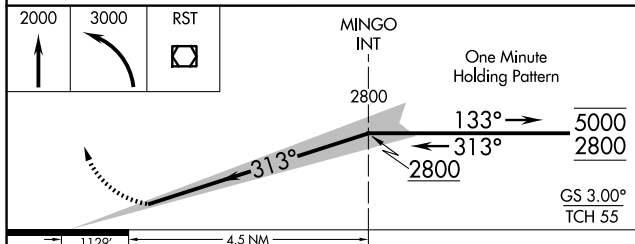
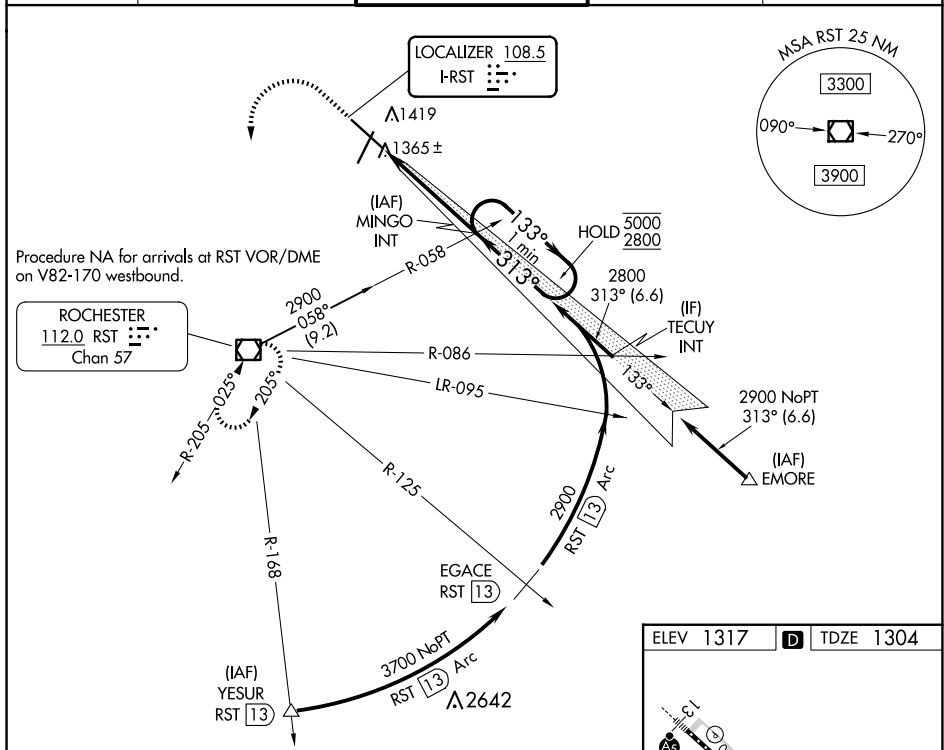
ALSF-2

MISSED APPROACH: Climb to 2000 then climbing left turn to 3000 direct RST VOR/DME and hold.

ASR

Procedure NA when tower closed.

ATIS 120.5	ROCHESTER APP CON★ 119.8 251.125	ROCHESTER TOWER★ 118.3 (CTAF) 0 257.8	GND CON 121.9	UNICOM 122.95
----------------------	--	---	-------------------------	-------------------------



CATEGORY	A	B	C	D
S-ILS 31	RA 104/12 100 DA 1404			

CATEGORY II ILS - SPECIAL AIRCREW & AIRCRAFT CERTIFICATION REQUIRED

