

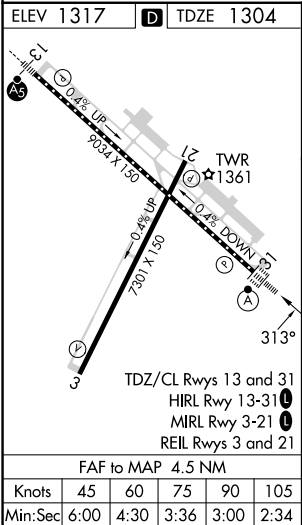
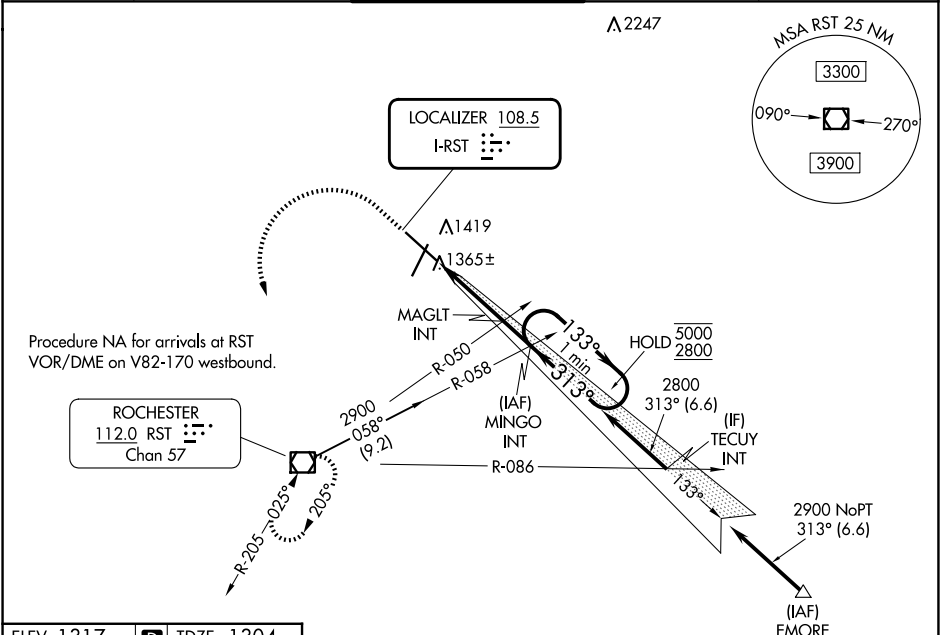
LOC I-RST	APP CRS	Rwy Idg	9033
108.5	313°	TDZE	1304
		Apt Elev	1317

COPTER ILS Y or LOC Y RWY 31

ROCHESTER INTL (RST)

RADAR required for procedure entry at EMORE.		ALSF-2	MISSED APPROACH: Climb to 2000 then climbing left turn to 3000 direct RST VOR/DME and hold.
ASR	For inop ALS increase visibility to RVR 5000.		

ATIS	ROCHESTER APP CON*	ROCHESTER TOWER*	GND CON	UNICOM
120.5	119.8 251.125	118.3 (CTAF) 257.8	121.9	122.95



A 2499		EMORE	
2000 ↑	3000 ↷	RST 	
CATEGORY		COPTER	
H-ILS 31	1504/12 200 (200-¼)		
H-LOC 31	1620/12 316 (400-¼)		