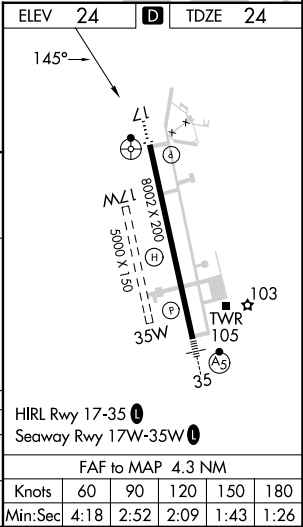
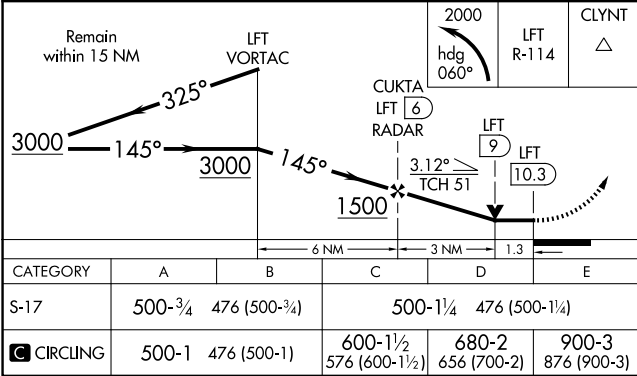
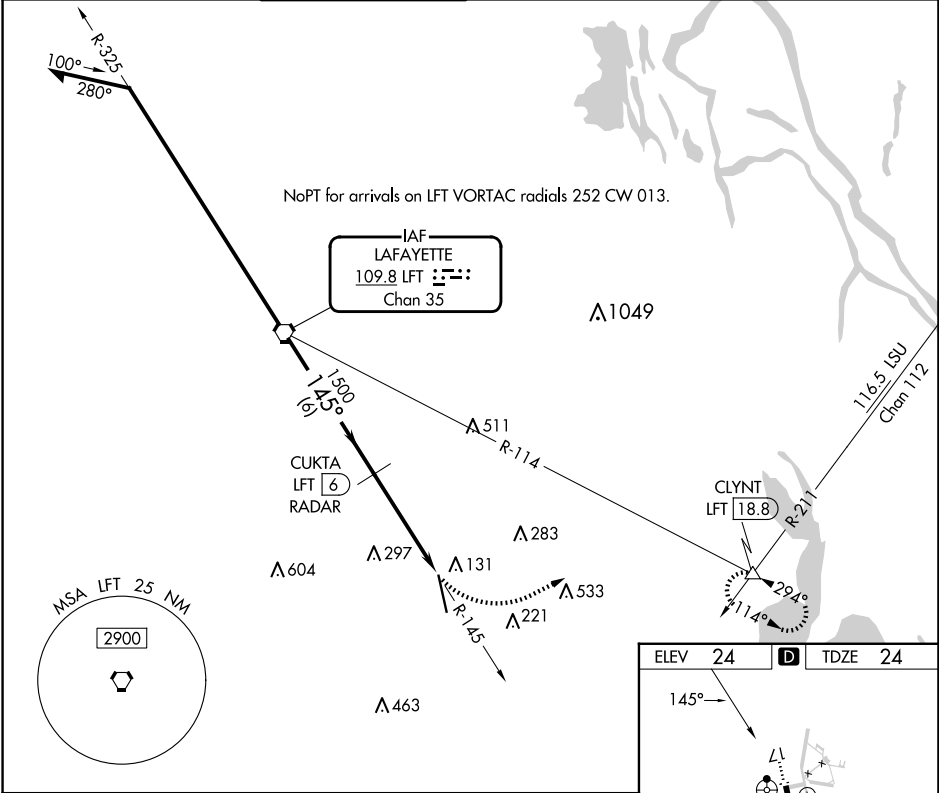


VORTAC LFT	APP CRS	Rwy Idg	8002
109.8	145°	TDZE	24
Chan 35		Apt Elev	24

VOR or TACAN RWY 17  
ACADIANA RGNL (A.R.A.)

▼ Circling NA to Rwy 17W and 35W. ▲ DME or RADAR required. For inop ALS, increase S-17 Cat E visibility to 1½ mile.		ODALS	MISSED APPROACH: Climbing left turn to 2000 on heading 060° and LFT VORTAC R-114 to CLYNT INT/18.8 DME and hold.		
ASOS	LAFAYETTE APP CON★	ACADIANA TOWER★	GND CON	CLNC DEL	CLNC DEL
133.325	121.1 268.7	125.0 (CTAF) 0 239.3	121.7	121.7	118.05 (when twr closed)
					UNICOM 122.95
					122.7 0



VOR or TACAN RWY 17

SC-4, 10 JUL 2025 to 07 AUG 2025

SC-4, 10 JUL 2025 to 07 AUG 2025