

WAAS
CH **40301**
W35A

APP CRS
348°

Rwy Idg
TDZE **21**
Apt Elev **24**

RNAV (GPS) RWY 35

ACADIANA RGNL (A.R.A.)

RNP APCH.

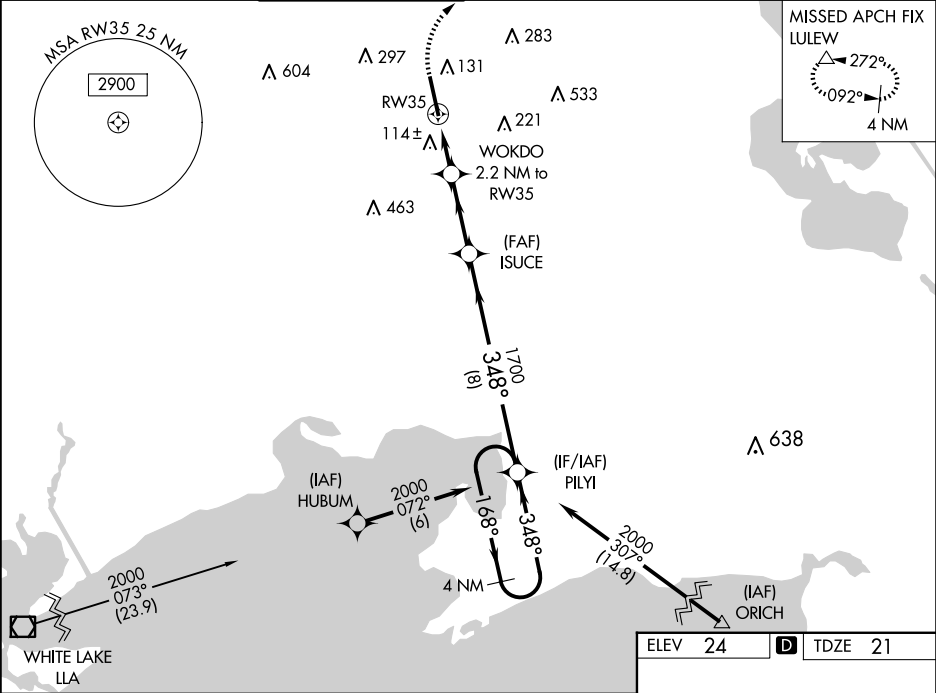
▼

For uncompensated Baro-VNAV systems, LNAV/VNAV NA below -3°C or above 54°C. For inop ALS, increase LNAV/VNAV all Cats visibility to ½ SM and LNAV Cats C/D visibility to 1 SM. Circling NA to Rwys 17W and 35W.

MALSR

MISSED APPROACH: Cimb to 440 then climbing right turn to 2000 direct LULEW and hold.

ASOS	LAFAYETTE APP CON★	ACADIANA TOWER★	GND CON	CLNC DEL	CLNC DEL	UNICOM	
133.325	121.1 268.7	125.0 (CTAF) 239.3	121.7	121.7	118.05 (when twr closed)	122.95	122.7



440 2000 LULEW

VGSI and RNAV glidepath not coincident (VGSI Angle 3.00/TCH 52).

4 NM Holding Pattern

*LNAV only.

ISUCE

WOKDO 2.2 NM to RW35

RW35

1700

348°

168°

2000

GP 3.00° TCH 52

760*

1700

1 NM 1.2 NM 2.9 NM 8 NM

CATEGORY	A	B	C	D
LPV DA		221-1½ 200 (200-½)		
LNAV/DA		303-½ 282 (300-½)		
LNAV MDA	380-½ 359 (400-½)		380-¾ 359 (400-¾)	
CIRCLING	440-1 416 (500-1)	480-1 456 (500-1)	600-1½ 576 (600-½)	680-2 656 (700-2)

