

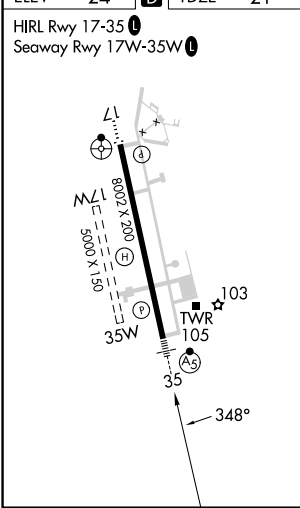
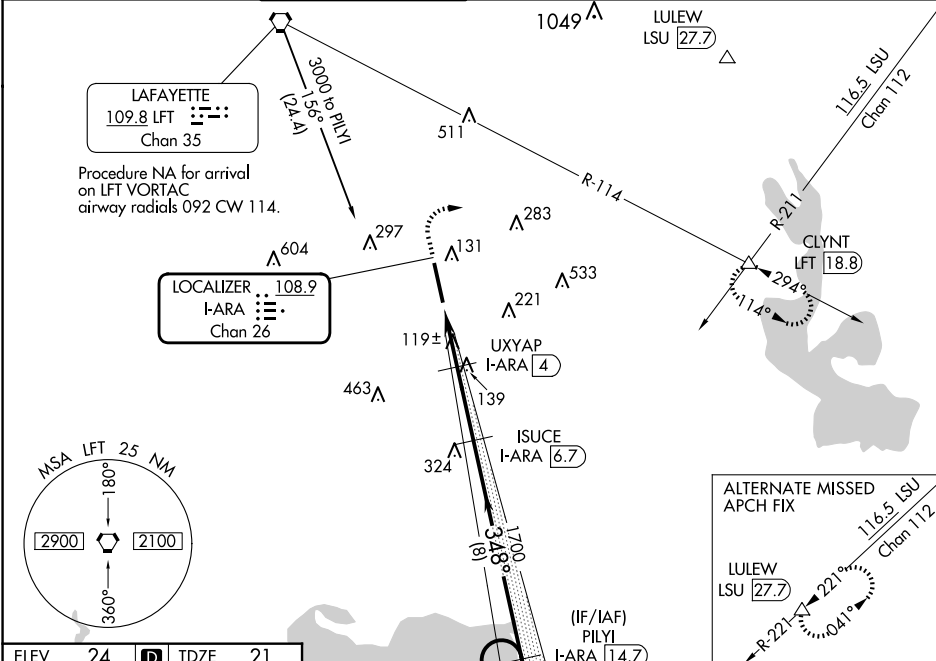


LOC/DME I-ARA 108.9 Chan 26	APP CRS 348°	Rwy Idg 8002 TDZE 21 Apt Elev 24
---	------------------------	---

ILS or LOC RWY 35
ACADIANA RGNL (ARA)

DME required for procedure entry. DME required for LOC only.							<div>MALSR</div> <div></div>		MISSED APPROACH: Climb to 800 then climbing right turn to 2000 on heading 080° and LFT R-114 to CLYNT INT/LFT 18.8 DME and hold.		
<div><div></div><div>Circling NA to Rwy 17W and 35W. For inop ALS increase S-ILS 35 Cat E visibility to ¾ SM and S-LOC 35 Cats C/D/E visibility to 1 ½ SM.</div></div>											
ASOS		LAFAYETTE APP CON ★		ACADIANA TOWER ★		GND CON	CLNC DEL	CLNC DEL	UNICOM		
133.325		121.1 268.7		125.0 (CTAF) 0 239.3		121.7	121.7	118.05 (when twr closed)	122.95	122.7 0	



ELEV 24 D TDZE 21					
800 ↑ hdg 080°	2000 ↻ R-114	LFT R-114	CLYNT △	ISUCE I-ARA 6.7	PILIYI I-ARA 14.7
*LOC only.					One Minute Holding Pattern
					4500 2000
1 NM 1.4 NM 2.7 NM 8 NM					GS 3.00° TCH 51
CATEGORY	A	B	C	D	E
S-ILS 35	221-1/2 200 (200-1/2)				
S-LOC 35	440-1/2 419 (500-1/2) 440-3/4 419 (500-3/4)				
CIRCLING	440-1 416 (500-1)	480-1 456 (500-1)	600-1 1/2 576 (600-1 1/2)	680-2 656 (700-2)	900-3 876 (900-3)

SC-4, 10 JUL 2025 to 07 AUG 2025

SC-4, 10 JUL 2025 to 07 AUG 2025